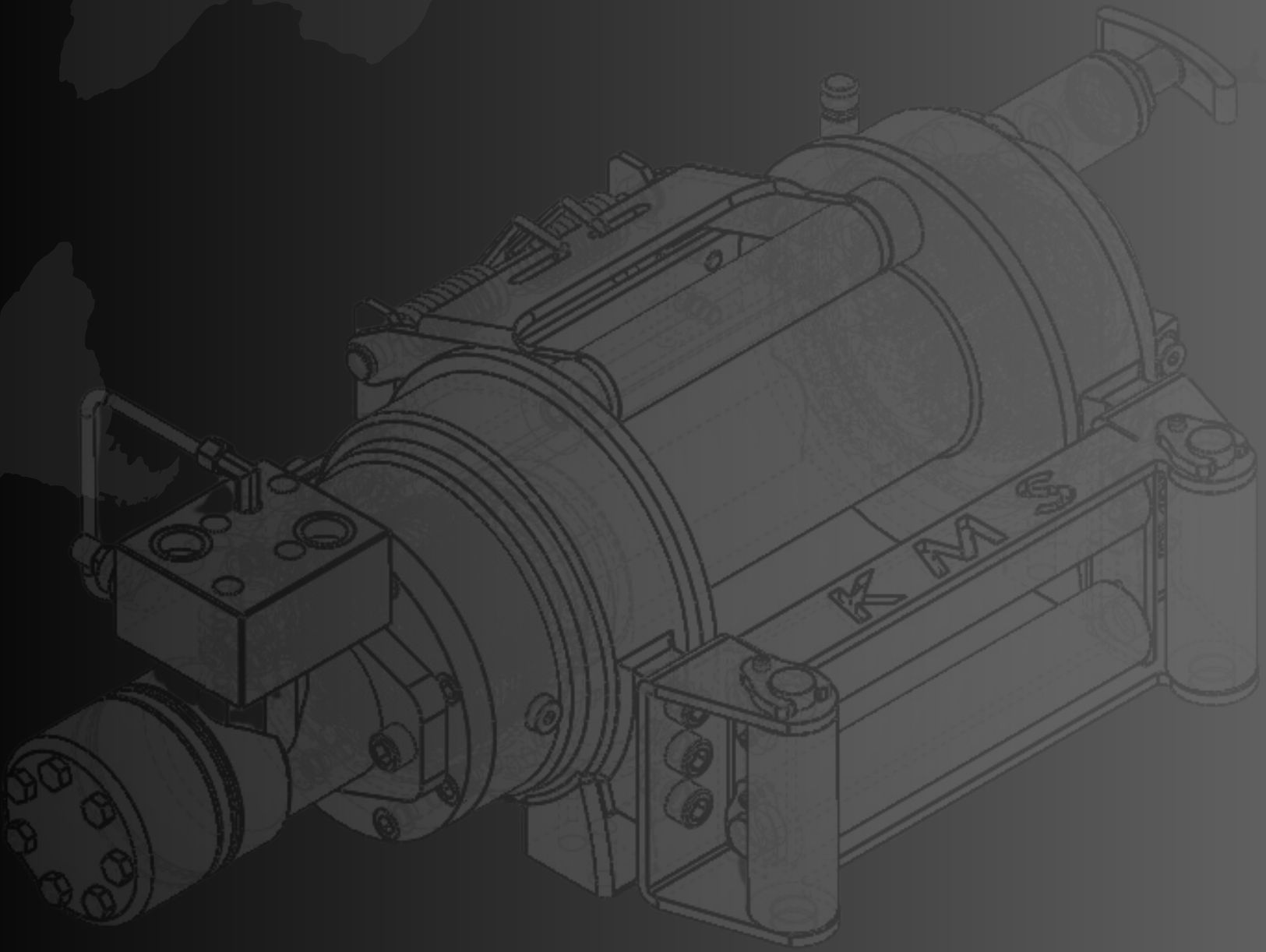


KMS

WINCH[®]

hydraulic machine



Hydraulic Winch Product Catalog

Since 1902

Kms Hydraulic Winch Systems

POWER.TRUST.QUALITY

www.kmswinch.com

High Production and Stock Capacity

about us

Our company, which started its commercial activities in 2014 with the title of Kardesler Makine Sanayi with the production of spare parts for construction machinery,As of 2015, it has started to produce hydraulic rope drums as Kms Hydraulic Crane Systems and has taken its place in the sector.

As Kms Winch, we produce hydraulic rope drums for pulling purposes, covering EN 14492-1 standards, starting from 3 tons to 50 tons of load capacity.

In addition, we contribute to the sector by producing hydraulic rope drums for lifting purposes, bridge maintenance vehicles carrier drums, hydraulic and mechanical forestry rope drums, rope alignment guide systems, planetary walking motors and hydraulic disc brakes in different tonnages.

Kms Winch has become a sought-after brand in a short time both in the domestic and international markets, thanks to the strong, quality, safe and durable products it has produced as a result of long engineering studies.

Today, we are exporting the products we have produced at the point we have arrived at to more than 20 countries in 4 continents of the world.

Mission

To be a solution partner to its stakeholders with reliable, innovative and sustainable quality.

Vision

To be a leading and world brand company in its sector.

POWER.TRUST.QALITY

www.kmswinch.com

KMS **WINCH**[®]
hydraulic machine



We Deliver All Over the
World

POWER.TRUST.QUALITY

www.kmswinch.com

EN 14492-1
COMPLIANT



- High-strength, long-lasting steel body
- Extra reinforced planetary gear system by heat treatment made of special steel
- Lightweight and strong design
- Hydraulic disc brake system holding 100% load
- Front pulley and spring rope tensioner offered as standard
- Manual clutch as standard
- High torque hydromotor
- Corrosion and rust resistant electrostatic powder paint
- CE Machinery Directive 2006/42/EC
- Relevant standards EN 14492-1 : 2006 Standard for power-driven cranes

Max. Pulling Force kg/lbs	3.600 kg (7936 lbs)
Max.Rope Diameter (mm/in)	10 mm (3/8")
Max.Rope Length (m-ft)	41 m (134 ft)
Hydromotor(cc/in³)	200 cc (12 in³)
Max. Pump Flow (lt/min-g/min)	60 L (15.8 gal)
Gear Ratio	5 : 1
Max. working pressure (bar/psi)	155 bar (2248 psi)
Recommended Gear Oil	80 w 90 - 0.75 L
Product Weight	59 kg (130 lbs)

Rope Winding Number	Pulling Capacity (kg/lbs)	Rope Winding Speed (mt-min/ft-min)	Rope Length (m/ft)
1	3600/7936	18.2/59	6,85/22
2	3038/6697	20.1/65	14,4/47
3	2619/5773	22/72	22,6/74
4	2301/5072	29,3/78	31,5/103
5	2052/4523	25,8/84	41/134

Pulling Capacity **kg/lb** Rope Speed **m/min-ft/min** Rope Length **m/ft**

- Warning!!!
- The A-B lines must be open to the T-Tank line before the winch can be started.
- Hydromotor Drain line must be open
- The last 5 turns of rope should always be left on the winch.
- This winch is designed and manufactured for towing purposes, do not use for lifting people or materials!
- Kms Winch reserves the right to make changes in technical details.

Standard

- Roller Fairlead
- Cable Tensioner
- Manual Clutch

Optional

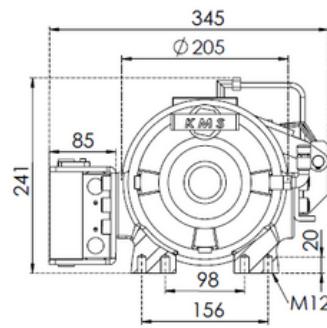
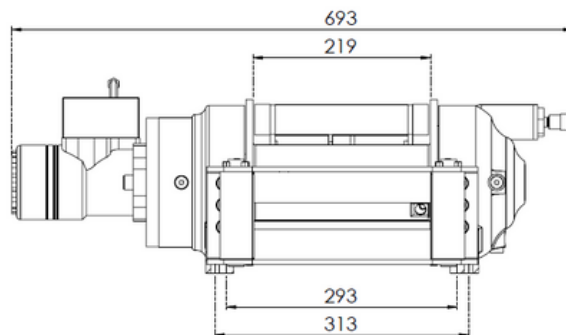
- Air Clutch
- IP67 - IP 68

Hydraulic Inlets

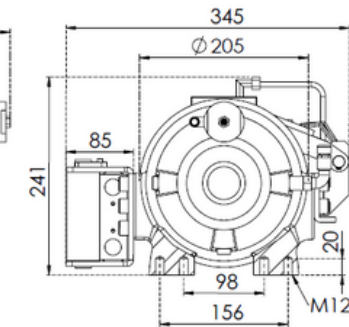
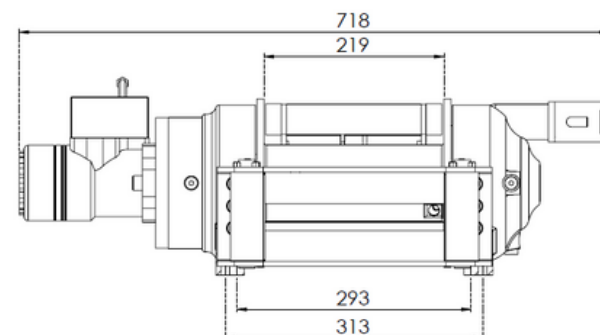
- G 1/2"

Mounting Bolts

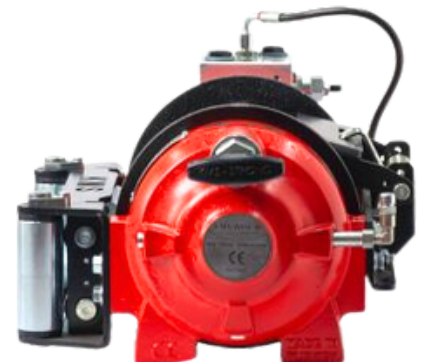
- 8 pieces M12 8,8



[Standard]
Manual Clutch



[Optional]
Air Clutch





- High-strength, long-lasting steel body
- Extra reinforced planetary gear system by heat treatment made of special steel
- Lightweight and strong design
- Hydraulic disc brake system holding 100% load
- Front pulley and spring rope tensioner offered as standard
- Manual clutch as standard
- High torque hydromotor
- Corrosion and rust resistant electrostatic powder paint
- CE Machinery Directive 2006/42/EC
- Relevant standards EN 14492-1 : 2006 Standard for power-driven cranes

Max. Pulling Force kg/lbs	4.600 kg (10141 lbs)
Max.Rope Diameter (mm/in)	10 mm (3/8")
Max.Rope Length (m-ft)	41 m (134 ft)
Hydromotor(cc/in³)	250 cc (15 in³)
Max. Pump Flow (lt/min-g/min)	60 L (15.8 gal)
Gear Ratio	5 : 1
Max. working pressure (bar/psi)	160 bar (2320 psi)
Recommended Gear Oil	80 w 90 - 0.75 L
Product Weight	60 kg (132 lbs)

Rope Winding Number	Pulling Capacity (kg/lbs)	Rope Winding Speed (mt-min/ft-min)	Rope Length (m/ft)
1	4600/10141	14.5/47	6,85/22
2	3880/8553	16/52	14,4/47
3	3350/7385	17.6/57	22,6/74
4	2940/6481	19.1/62	31,5/103
5	2621/5778	20.7/67	41/134

Pulling Capacity **kg/lb** Rope Speed **m/min-ft/min** Rope Length **m/ft**

- Warning!!!
- The A-B lines must be open to the T-Tank line before the winch can be started.
- Hydromotor Drain line must be open
- The last 5 turns of rope should always be left on the winch.
- This winch is designed and manufactured for towing purposes, do not use for lifting people or materials!
- Kms Winch reserves the right to make changes in technical details.

Standard

- Roller Fairlead
- Cable Tensioner
- Manual Clutch

Optional

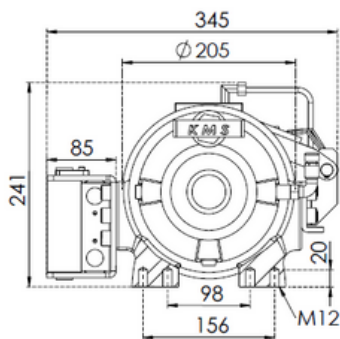
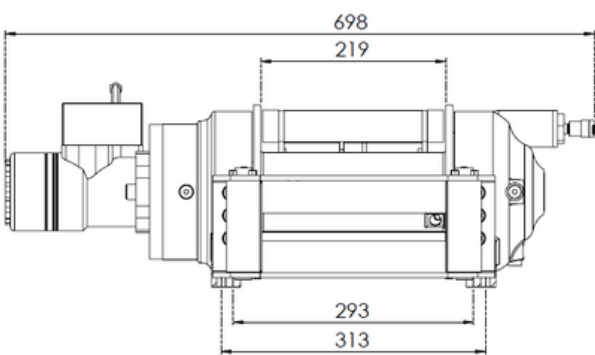
- Air Clutch
- IP67 - IP 68

Hydraulic Inlets

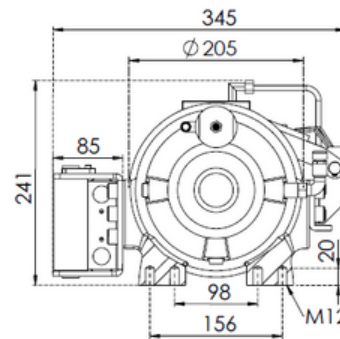
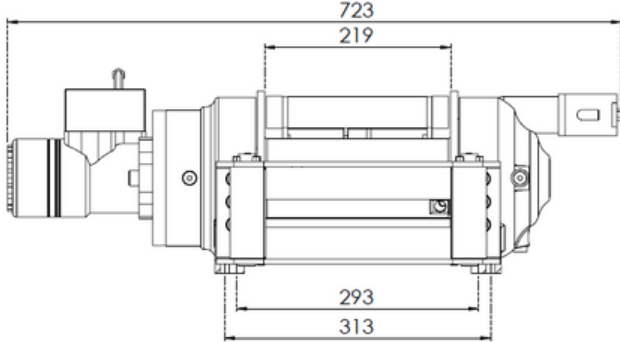
- G 1/2"

Mounting Bolts

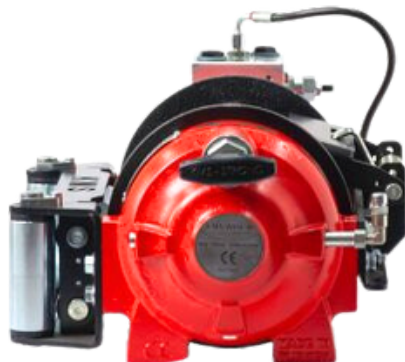
- 8 pieces M12 8.8K



[Standard]
Manual Clutch



[Optional]
Air Clutch





- High-strength, long-lasting steel body
- Extra reinforced planetary gear system by heat treatment made of special steel
- Lightweight and strong design
- Hydraulic disc brake system holding 100% load
- Front pulley and spring rope tensioner offered as standard
- Manual clutch as standard
- High torque hydromotor
- Corrosion and rust resistant electrostatic powder paint
- CE Machinery Directive 2006/42/EC
- Relevant standards EN 14492-1 : 2006 Standard for power-driven cranes

Max. Pulling Force kg/lbs	5.400 kg (11904 lbs)
Max.Rope Diameter (mm/in)	12 mm (1/2")
Max.Rope Length (m-ft)	35 m (114 ft)
Hydromotor(cc/in³)	315 cc (19 in³)
Max. Pump Flow (lt/min-g/min)	60 L (15.8 gal)
Gear Ratio	5 : 1
Max. working pressure (bar/psi)	150 bar (2175 psi)
Recommended Gear Oil	80 w 90 - 0.75 L
Product Weight	61 kg (134 lbs)

Rope Winding Number	Pulling Capacity (kg/lbs)	Rope Winding Speed (mt-min/ft-min)	Rope Length (m/ft)
1	5400/11904	11.5/37	5.8/19
2	4435/9777	13/42	12.2/40
3	3748/8262	14.4/47	19.3/63
4	3246/7156	15.9/52	27.1/89
5	2862/6309	17.4/57	35/114

TPulling Capacity **kg/lb** Rope Speed **m/min-ft/min** Rope Length **m/ft**

- Warning!!!
- The A-B lines must be open to the T-Tank line before the winch can be started.
- Hydromotor Drain line must be open
- The last 5 turns of rope should always be left on the winch.
- This winch is designed and manufactured for towing purposes, do not use for lifting people or materials!
- Kms Winch reserves the right to make changes in technical details.

Standard

- Roller Fairlead
- Cable Tensioner
- Manual Clutch

Optional

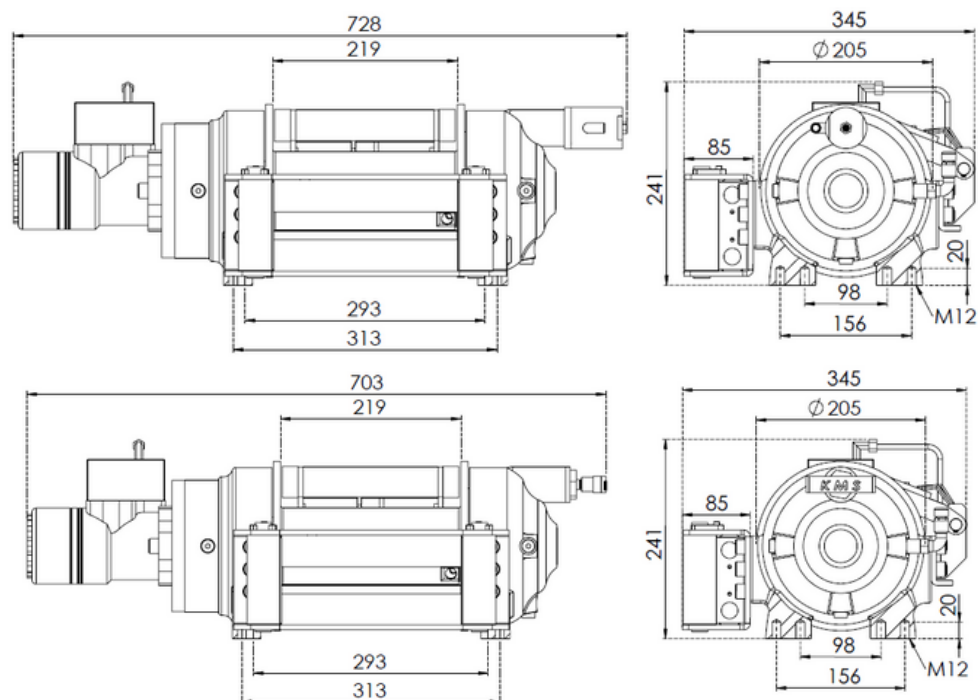
- Air Clutch
- IP67 - IP 68

Hydraulic Inlets

- G 1/2"

Mounting Bolts

- 8 pieces M12 8.8K

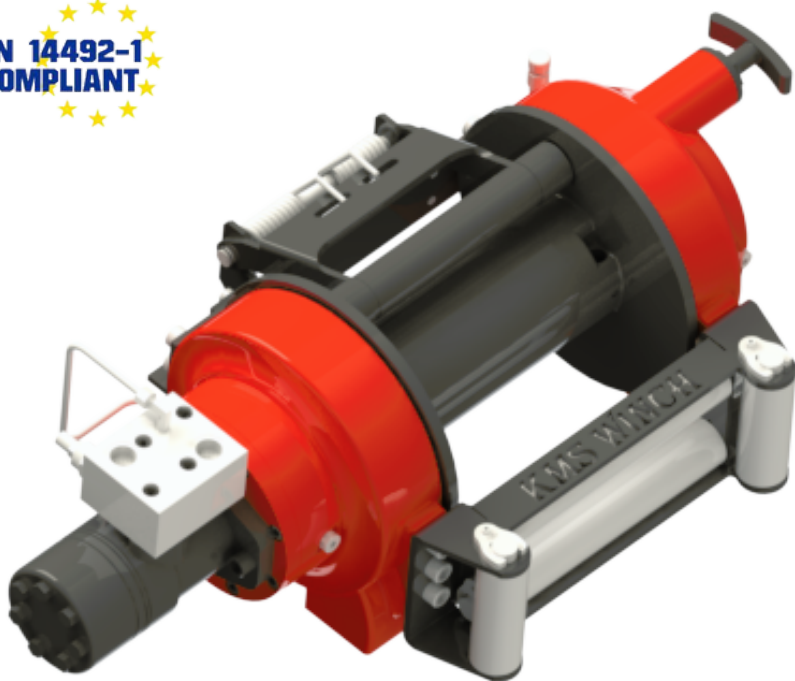


[Standard]
Manual Clutch



[Optional]
Air Clutch





- High-strength, long-lasting steel body
- Extra reinforced planetary gear system by heat treatment made of special steel
- Lightweight and strong design
- Hydraulic disc brake system holding 100% load
- Front pulley and spring rope tensioner offered as standard
- Manual clutch as standard
- High torque hydromotor
- Corrosion and rust resistant electrostatic powder paint
- CE Machinery Directive 2006/42/EC
- Relevant standards EN 14492-1 : 2006 Standard for power-driven cranes

Max. Pulling Force kg/lbs	6.200 kg (13668 lbs)
Max.Rope Diameter (mm/in)	12 mm (1/2")
Max.Rope Length (m-ft)	53 m (173 ft)
Hydromotor(cc/in³)	315 cc (19 in³)
Max. Pump Flow (lt/min-g/min)	60 L (15.8 gal)
Gear Ratio	6 : 1
Max. working pressure (bar/psi)	158 bar (2291 psi)
Recommended Gear Oil	80 w 90 - 0.75 L
Product Weight	81 kg (178 lbs)

Rope Winding Number	Pulling Capacity (kg/lbs)	Rope Winding Speed (mt-min/ft-min)	Rope Length (m/ft)
1	6200/13668	10.6/34	7/22
2	5165/11386	11.8/38	14.7/48
3	4412/9726	13/42	23.1/75
4	3852/8492	14.3/46	32.4/106
5	3417/7533	15.5/50	42.4/138
6	3071/6770	16.7/54	53/173

Pilling Capacity **kg/lb** Rope Speed **m/min-ft/min** Rope Length **m/ft**

- Warning!!!
- The A-B lines must be open to the T-Tank line before the winch can be started.
- Hydromotor Drain line must be open
- The last 5 turns of rope should always be left on the winch.
- This winch is designed and manufactured for towing purposes, do not use for lifting people or materials!
- Kms Winch reserves the right to make changes in technical details.

Standard

- Roller Fairlead
- Cable Tensioner
- Manual Clutch

Hydraulic Inlets

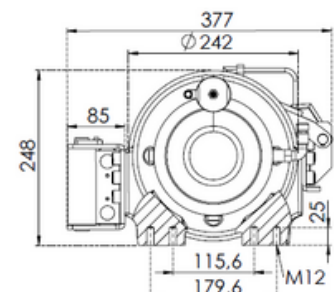
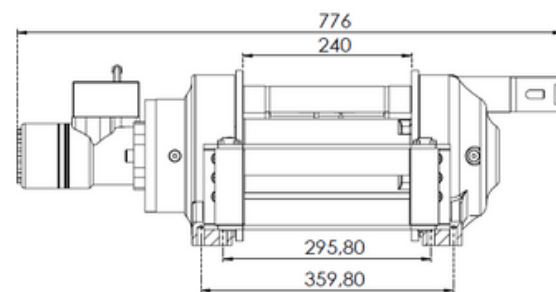
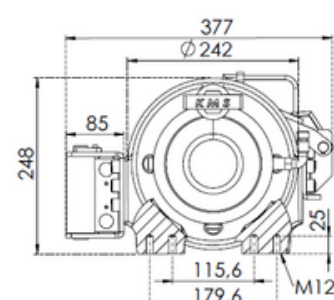
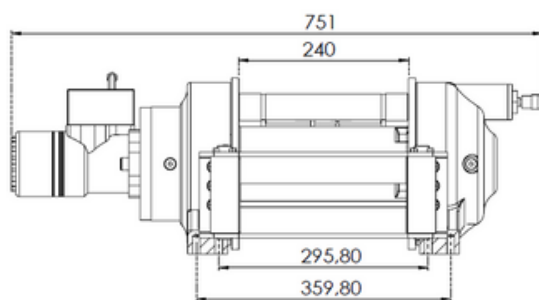
- G 1/2"

Optional

- Air Clutch
- IP67 - IP 68
- Rope allgner guide system

Mounting Bolts

- 16 pieces M12 8.8K

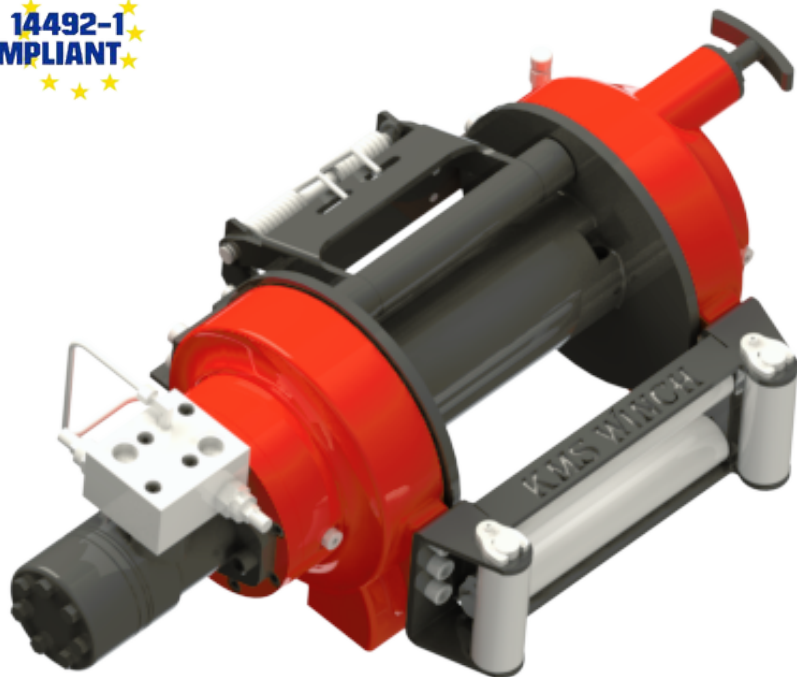


[Standard]
Manual Clutch



[Optional]
Air Clutch





- High-strength, long-lasting steel body
- Extra reinforced planetary gear system by heat treatment made of special steel
- Lightweight and strong design
- Hydraulic disc brake system holding 100% load
- Front pulley and spring rope tensioner offered as standard
- Manual clutch as standard
- High torque hydromotor
- Corrosion and rust resistant electrostatic powder paint
- CE Machinery Directive 2006/42/EC
- Relevant standards EN 14492-1 : 2006 Standard for power-driven cranes

Max. Pulling Force kg/lbs	7.200 kg (15873 lbs)
Max.Rope Diameter (mm/in)	14 mm (3/9")
Max.Rope Length (m-ft)	37.7 m (123 ft)
Hydromotor(cc/in³)	315 cc (19 in³)
Max. Pump Flow (lt/min-g/min)	60 L (15.8 gal)
Gear Ratio	6 : 1
Max. working pressure (bar/psi)	185 bar (2683 psi)
Recommended Gear Oil	80 w 90 - 0.75 L
Product Weight	83 kg (182 lbs)

Rope Winding Number	Pulling Capacity (kg/lbs)	Rope Winding Speed (mt-min/ft-min)	Rope Length (m/ft)
1	7200/15873	10.6/34	6/19
2	5840/12874	12/39	12.8/41
3	4900/10802	13.4/43	20.3/66
4	4230/9325	14,8/48	28.6/93
5	3717/8194	16.3/53	37.7/123

Pulling Capacity **kg/lb** Rope Speed **m/min-ft/min** Rope Length **m/ft**

- Warning!!!
- The A-B lines must be open to the T-Tank line before the winch can be started.
- Hydromotor Drain line must be open
- The last 5 turns of rope should always be left on the winch.
- This winch is designed and manufactured for towing purposes, do not use for lifting people or materials!
- Kms Winch reserves the right to make changes in technical details.

Standard

- Roller Fairlead
- Cable Tensioner
- Manual Clutch

Hydraulic Inlets

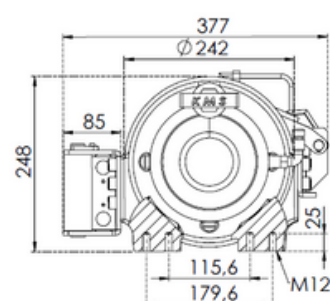
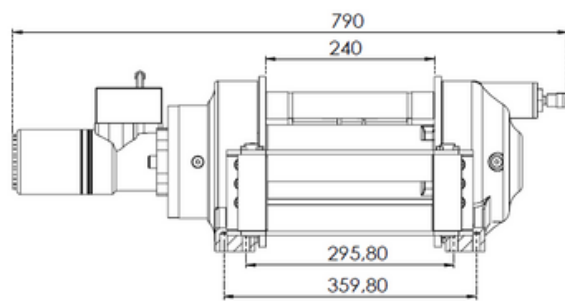
- G 1/2"

Optional

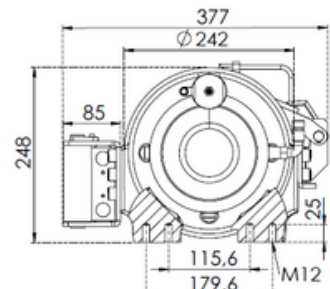
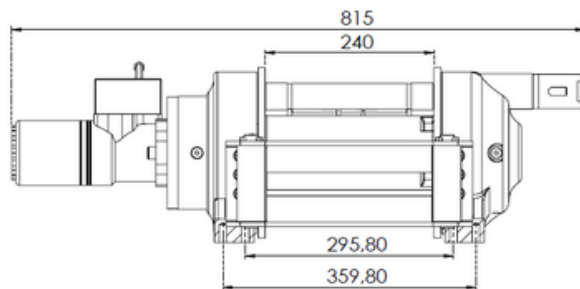
- Air Clutch
- IP67 - IP 68
- Rope alligner guide system

Mounting Bolts

- 16 pieces M12 8.8K



[Standard]
Manual Clutch



[Optional]
Air Clutch





- High-strength, long-lasting steel body
- Extra reinforced planetary gear system by heat treatment made of special steel
- Lightweight and strong design
- Hydraulic disc brake system holding 100% load
- Front pulley and spring rope tensioner offered as standard
- Manual clutch as standard
- High torque hydromotor
- Corrosion and rust resistant electrostatic powder paint
- CE Machinery Directive 2006/42/EC
- Relevant standards EN 14492-1 : 2006 Standard for power-driven cranes

Max. Pulling Force kg/lbs	8.200 kg (18077 lbs)
Max.Rope Diameter (mm/in)	14 mm (3/9")
Max.Rope Length (m-ft)	37.7 m (123 ft)
Hydromotor(cc/in³)	400 cc (24 in³)
Max. Pump Flow (lt/min-g/min)	60 L (15.8 gal)
Gear Ratio	6 : 1
Max. working pressure (bar/psi)	165 bar (2393 psi)
Recommended Gear Oil	80 w 90 - 0.75 L
Product Weight	85 kg (187 lbs)

Rope Winding Number	Pulling Capacity (kg/lbs)	Rope Winding Speed (mt-min/ft-min)	Rope Length (m/ft)
1	8200/18077	8.4/27	6/19
2	6643/14645	9.5/31	12.8/41
3	5580/12301	10.6/34	20.3/66
4	4810/10604	11.7/38	28.6/93
5	4227/9318	12.8/41	37.7/123

Pulling Capacity **kg/lb** Rope Speed **m/min-ft/min** Rope Length **m/ft**

- Warning!!!
- The A-B lines must be open to the T-Tank line before the winch can be started.
- Hydromotor Drain line must be open
- The last 5 turns of rope should always be left on the winch.
- This winch is designed and manufactured for towing purposes, do not use for lifting people or materials!
- Kms Winch reserves the right to make changes in technical details.

Standard

- Roller Fairlead
- Cable Tensioner
- Manual Clutch

Hydraulic Inlets

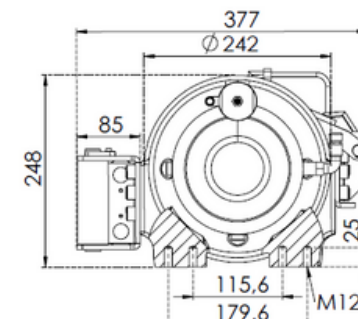
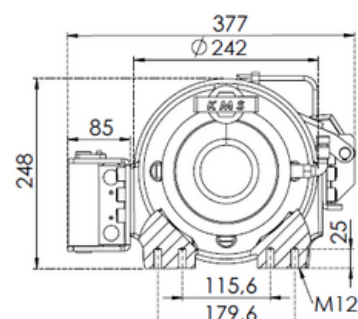
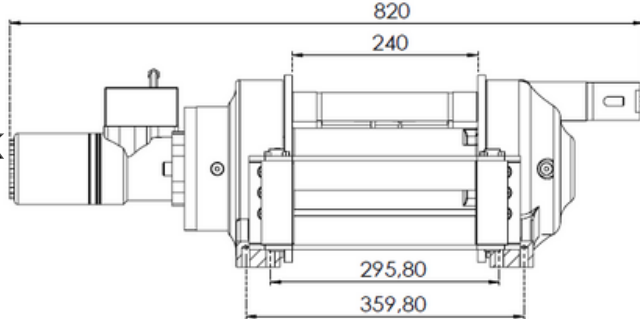
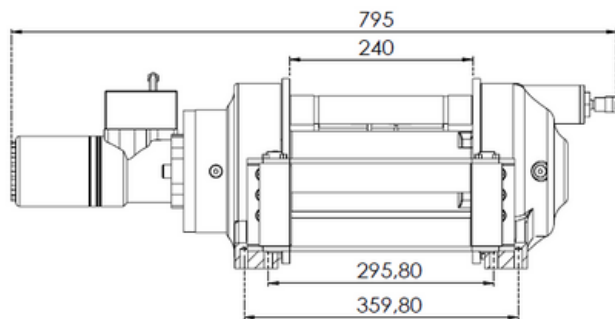
- G 1/2"

Optional

- Air Clutch
- IP67 - IP 68
- Rope alligner guide system

Mounting Bolts

- 16 pieces M12 8.8K



[Standard]
Manual Clutch



[Optional]
Air Clutch





- High-strength, long-lasting steel body
- Grooved drum
- Two-stage planetary gear system made of special steel, extra-strengthened by heat treatment
- Light and strong design
- Hydraulic disc brake system holding 100% load
- Front pulley and spring rope tensioner offered as standard
- Manual rope unloading system as standard
- High torque hydromotor
- CE Machinery Directive 2006/42/EC
- Relevant standards EN 14492-1 : 2006 Standard for power-driven cranes

Max. Pulling Force kg/lbs	10.000 kg (22046 lbs)
Max.Rope Diameter (mm/in)	16 mm (7/11")
Max.Rope Length (m-ft)	46 m (150 ft)
Hydromotor(cc/in³)	160 cc (10 in³)
Max. Pump Flow (lt/min-g/min)	60 L (15.8 gal)
Gear Ratio	21 : 1
Max. working pressure (bar/psi)	185 bar (2683 psi)
Recommended Gear Oil	80 w 90 - 1 L
Product Weight	150 kg (330 lbs)

Rope Winding Number	Pulling Capacity (kg/lbs)	Rope Winding Speed (mt-min/ft-min)	Rope Length (m/ft)
1	10000/22046	7.7/25	7.6/24
2	8272/18236	8.6/28	16/52
3	7046/15533	9.5/31	25/82
4	6137/13529	10.5/34	35/115
5	5436/11984	11.4/37	46/150

Pulling Capacity **kg/lb** Rope Speed **m/min-ft/min** Rope Length **m/ft**

- Warning!!!
- The A-B lines must be open to the T-Tank line before the winch can be started.
- Hydromotor Drain line must be open
- The last 5 turns of rope should always be left on the winch.
- This winch is designed and manufactured for towing purposes, do not use for lifting people or materials!
- Kms Winch reserves the right to make changes in technical details.

Standard

- Roller Fairlead
- Cable Tensioner
- Manual Clutch

Optional

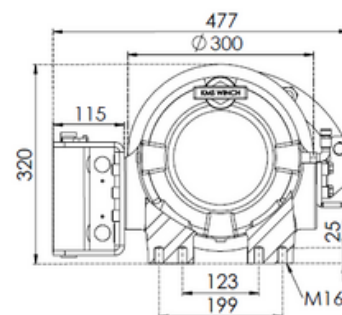
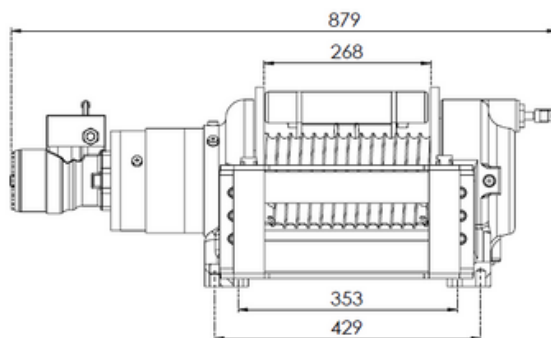
- Air Clutch
- IP67 - IP 68

Hydraulic Inlets

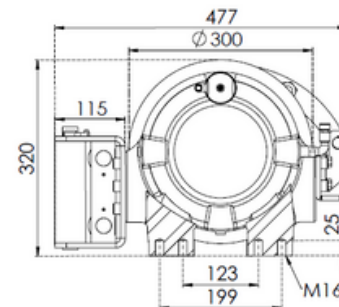
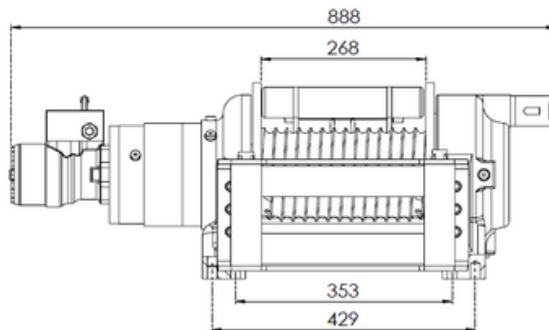
- G 1/2"

Mounting Bolts

- 16 pieces M16 8.8K

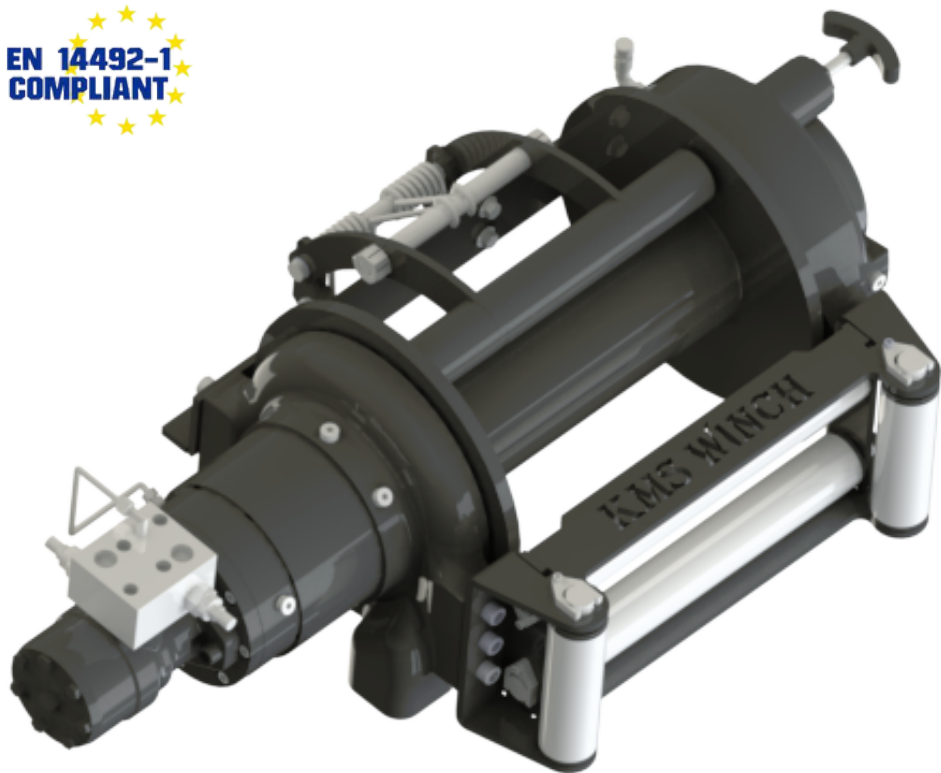


[Standard]
Manual Clutch



[Optional]
Air Clutch





- High-strength, long-lasting steel body
- Two-stage planetary gear system made of special steel, extra-strengthened by heat treatment
- Light and strong design
- Hydraulic disc brake system holding 100% load
- Front pulley and spring rope tensioner offered as standard
- Manual rope unloading system as standard
- High torque hydromotor
- CE Machinery Directive 2006/42/EC
- Relevant standards EN 14492-1 : 2006 Standard for power-driven cranes

Max. Pulling Force kg/lbs	10.000 kg (22046 lbs)
Max.Rope Diameter (mm/in)	16 mm (7/11")
Max.Rope Length (m-ft)	60 m (196 ft)
Hydromotor(cc/in³)	160 cc (10 in³)
Max. Pump Flow (lt/min-g/min)	60 L (15.8 gal)
Gear Ratio	21 : 1
Max. working pressure (bar/psi)	185 bar (2683 psi)
Recommended Gear Oil	80 w 90 - 1 L
Product Weight	170 kg (374 lbs)

Rope Winding Number	Pulling Capacity (kg/lbs)	Rope Winding Speed (mt-min/ft-min)	Rope Length (m/ft)
1	10000/22046	7.7/25	9.6/31
2	8272/18236	8.6/28	20.4/66
3	7046/15533	9.5/31	32.2/105
4	6137/13529	10.5/34	45.1/147
5	5436/11984	11.4/37	60/196

Pulling Capacity **kg/lb** Rope Speed **m/min-ft/min** Rope Length **m/ft**

- **Warning !!!**
- The A-B lines must be open to the T-Tank line before the winch can be started.
- Hydromotor Drain line must be open
- The last 5 turns of rope should always be left on the winch.
- This winch is designed and manufactured for towing purposes, do not use for lifting people or materials!
- Kms Winch reserves the right to make changes in technical details.

Standard

- Roller Fairlead
- Cable Tensioner
- Manual Clutch

Hydraulic Inlets

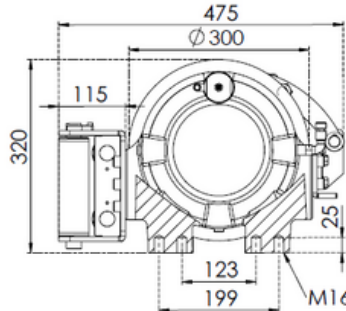
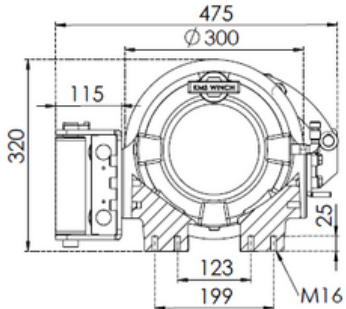
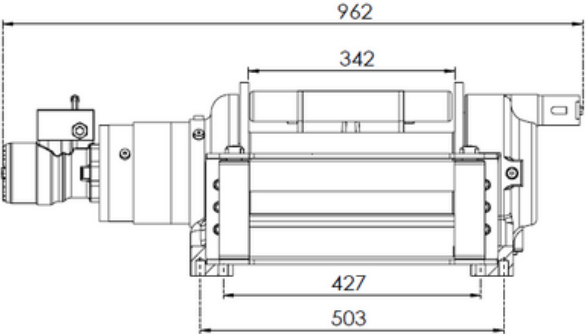
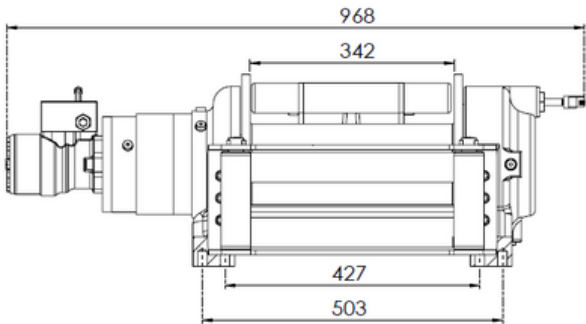
- G 1/2"

Opstional

- Air Clutch
- IP67 - IP 68

Mounting Bolts

- 16 pieces M16 8.8K



[Standard]
Manual Clutch



[Optional]
Air Clutch





- High-strength, long-lasting steel body
- Grooved drum
- Two-stage planetary gear system made of special steel, extra-strengthened by heat treatment
- Light and strong design
- Hydraulic disc brake system holding 100% load
- Front pulley and spring rope tensioner offered as standard
- Manual rope unloading system as standard
- High torque hydromotor
- CE Machinery Directive 2006/42/EC
- Relevant standards EN 14492-1 : 2006 Standard for power-driven cranes

Max. Pulling Force kg/lbs	12.000 kg (26455 lbs)
Max.Rope Diameter (mm/in)	16 mm (7/11")
Max.Rope Length (m-ft)	46 m (150 ft)
Hydromotor(cc/in³)	200 cc (12 in³)
Max. Pump Flow (lt/min-g/min)	60 L (15.8 gal)
Gear Ratio	21 : 1
Max. working pressure (bar/psi)	180 bar (2610 psi)
Recommended Gear Oil	80 w 90 - 1 L
Product Weight	155 kg (341 lbs)

Rope Winding Number	Pulling Capacity (kg/lbs)	Rope Winding Speed (mt-min/ft-min)	Rope Length (m/ft)
1	12000/26455	6.2/20	7.6/24
2	9970/21980	7/22	16/52
3	8495/18728	7.7/25	25/82
4	7400/16314	8.4/27	35/115
5	6550/14440	9.1/29	46/150

Pulling Capacity **kg/lb** Rope Speed **m/min-ft/min** Rope Length **m/ft**

- **Warning !!!**
- The A-B lines must be open to the T-Tank line before the winch can be started.
- Hydromotor Drain line must be open
- The last 5 turns of rope should always be left on the winch.
- This winch is designed and manufactured for towing purposes, do not use for lifting people or materials!
- Kms Winch reserves the right to make changes in technical details.

Standard

- Roller Fairlead
- Cable Tensioner
- Manual Clutch

Optional

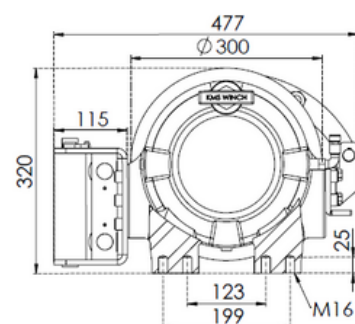
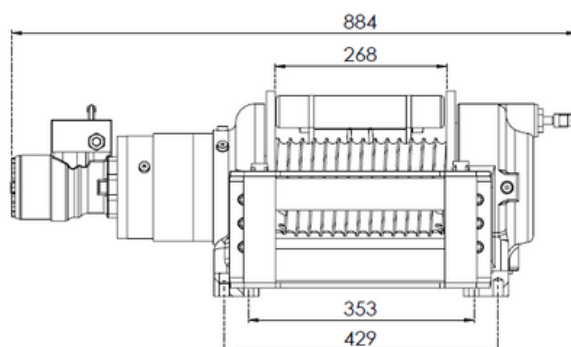
- Air Clutch
- IP67 - IP 68

Hydraulic Inlets

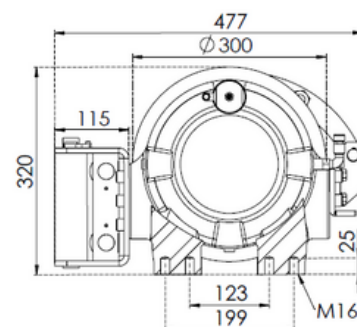
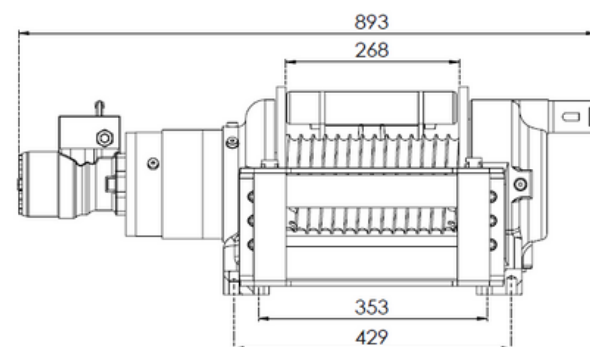
- G 1/2"

Mounting Bolts

- 16 pieces M16 8.8K

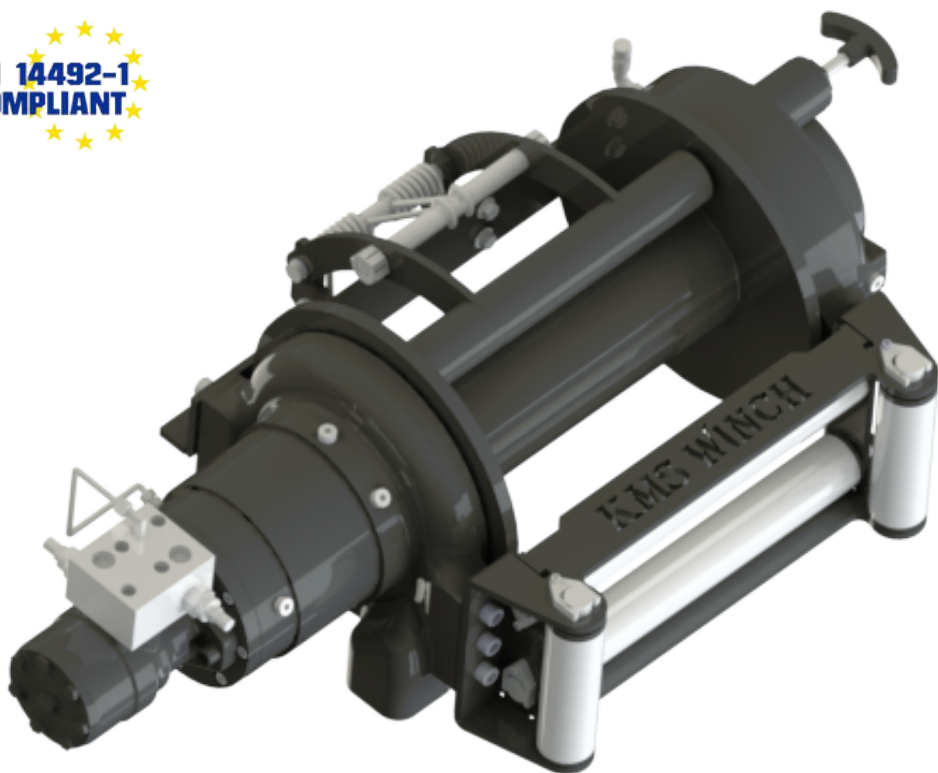


[Standard]
Manual Clutch



[Optional]
Air Clutch





- High-strength, long-lasting steel body
- Two-stage planetary gear system made of special steel, extra-strengthened by heat treatment
- Light and strong design
- Hydraulic disc brake system holding 100% load
- Front pulley and spring rope tensioner offered as standard
- Manual rope unloading system as standard
- High torque hydromotor
- CE Machinery Directive 2006/42/EC
- Relevant standards EN 14492-1 : 2006 Standard for power-driven cranes

Max. Pulling Force kg/lbs	12.000 kg (26455 lbs)
Max.Rope Diameter (mm/in)	16 mm (7/11")
Max.Rope Length (m-ft)	60 m (196 ft)
Hydromotor(cc/in³)	200 cc (12 in³)
Max. Pump Flow (lt/min-g/min)	60 L (15.8 gal)
Gear Ratio	21 : 1
Max. working pressure (bar/psi)	180 bar (2610 psi)
Recommended Gear Oil	80 w 90 - 1 L
Product Weight	175 kg (385 lbs)

Rope Winding Number	Pulling Capacity (kg/lbs)	Rope Winding Speed (mt-min/ft-min)	Rope Length (m/ft)
1	12000/26455	6.2/20	9.6/31
2	9970/21980	7/22	20.4/66
3	8495/18728	7.7/25	32.2/105
4	7400/16314	8.4/27	45.1/147
5	6550/14440	9.1/29	60/196

Pulling Capacity **kg/lb** Rope Speed **m/min-ft/min** Rope Length **m/ft**

- **Warning !!!**
- The A-B lines must be open to the T-Tank line before the winch can be started.
- Hydromotor Drain line must be open
- The last 5 turns of rope should always be left on the winch.
- This winch is designed and manufactured for towing purposes, do not use for lifting people or materials!
- Kms Winch reserves the right to make changes in technical details.

Standard

- Roller Fairlead
- Cable Tensioner
- Manual Clutch

Hydraulic Inlets

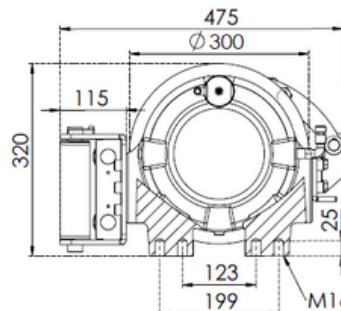
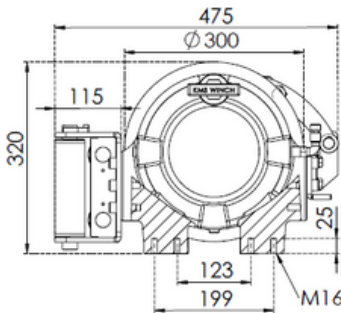
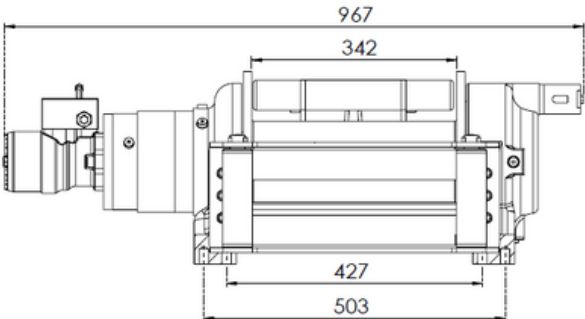
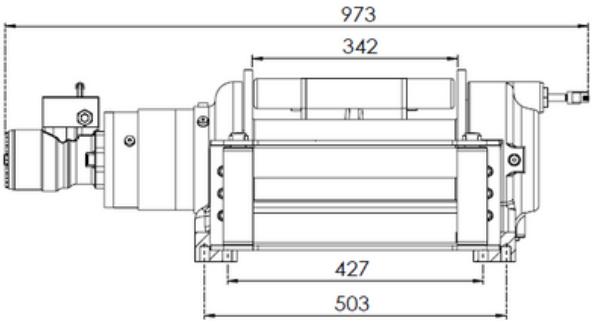
- G 1/2"

Optional

- Air Clutch
- IP67 - IP 68

Mounting Bolts

- 16 pieces M16 8.8K



[Standard]
Manual Clutch



[Optional]
Air Clutch



EN 14492-1
COMPLIANT



- High-strength, long-lasting steel body
- Grooved drum
- Two-stage planetary gear system made of special steel, extra-strengthened by heat treatment
- Light and strong design
- Hydraulic disc brake system holding 100% load
- Front pulley and spring rope tensioner offered as standard
- Manual rope unloading system as standard
- High torque hydromotor
- CE Machinery Directive 2006/42/EC
- Relevant standards EN 14492-1 : 2006 Standard for power-driven cranes

Max. Pulling Force kg/lbs	15.000 kg (33069 lbs)
Max.Rope Diameter (mm/in)	18 mm (8/11")
Max.Rope Length (m-ft)	48 m (158 ft)
Hydromotor(cc/in³)	200 cc (12 in³)
Max. Pump Flow (lt/min-g/min)	60 L (15.8 gal)
Gear Ratio	36 : 1
Max. working pressure (bar/psi)	160 bar (2320 psi)
Recommended Gear Oil	80 w 90 - 2 L
Product Weight	200 kg (440 lbs)

Rope Winding Number	Pulling Capacity (kg/lbs)	Rope Winding Speed (mt-min/ft-min)	Rope Length (m/ft)
1	15000/33069	4.5/14	10.5/34
2	12580/27734	5/16	22/72
3	10825/23865	5.4/17	34.7/113
4	9500/20943	5.9/19	48.4/158

Pulling Capacity **kg/lb** Rope Speed **m/min-ft/min** Rope Length **m/ft**

- **Warning !!!**
- The A-B lines must be open to the T-Tank line before the winch can be started.
- Hydromotor Drain line must be open
- The last 5 turns of rope should always be left on the winch.
- This winch is designed and manufactured for towing purposes, do not use for lifting people or materials!
- Kms Winch reserves the right to make changes in technical details.

Standard

- Roller Fairlead
- Cable Tensioner
- Manual Clutch

Hydraulic Inlets

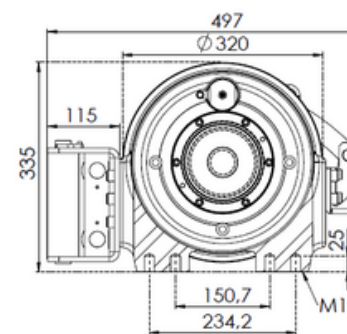
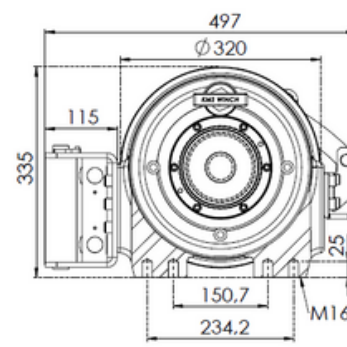
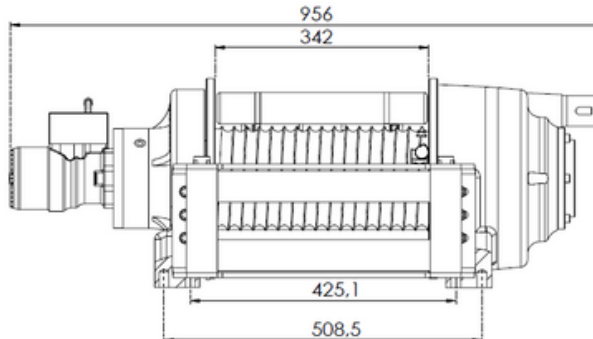
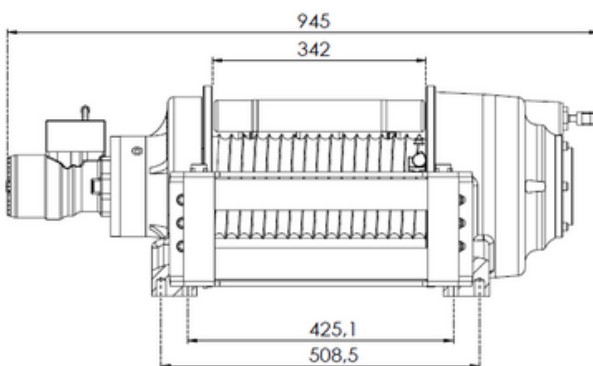
- G 1/2"

Optional

- Air Clutch
- IP67 - IP 68

Mounting Bolts

- 16 pieces M16 8.8K



[Standard]
Manual Clutch



[Optional]
Air Clutch





- High-strength, long-lasting steel body
- Grooved drum
- Two-stage planetary gear system made of special steel, extra-strengthened by heat treatment
- Light and strong design
- Hydraulic disc brake system holding 100% load
- Front pulley and spring rope tensioner offered as standard
- Manual rope unloading system as standard
- High torque hydromotor
- CE Machinery Directive 2006/42/EC
- Relevant standards EN 14492-1 : 2006 Standard for power-driven cranes

Max. Pulling Force kg/lbs	18.000 kg (39683 lbs)
Max.Rope Diameter (mm/in)	18 mm (8/11")
Max.Rope Length (m-ft)	48 m (158 ft)
Hydromotor(cc/in³)	250 cc (15 in³)
Max. Pump Flow (lt/min-g/min)	60 L (15.8 gal)
Gear Ratio	36 : 1
Max. working pressure (bar/psi)	155 bar (2248 psi)
Recommended Gear Oil	80 w 90 - 2 L
Product Weight	205 kg (451 lbs)

Rope Winding Number	Pulling Capacity (kg/lbs)	Rope Winding Speed (mt-min/ft-min)	Rope Length (m/ft)
1	18000/39683	3.6/11	10.5/34
2	15121/33336	4/13	22/72
3	13011/28684	4.4/14	34.7/113
4	10172/22425	4.7/15	48.4/158

Pulling Capacity **kg/lb** Rope Speed **m/min-ft/min** Rope Length **m/ft**

- **Warning !!!**
- The A-B lines must be open to the T-Tank line before the winch can be started.
- Hydromotor Drain line must be open
- The last 5 turns of rope should always be left on the winch.
- This winch is designed and manufactured for towing purposes, do not use for lifting people or materials!
- Kms Winch reserves the right to make changes in technical details.

Standard

- Roller Fairlead
- Cable Tensioner
- Manual Clutch

Optional

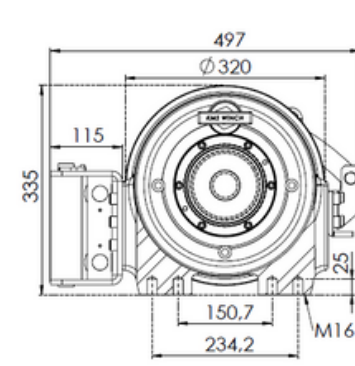
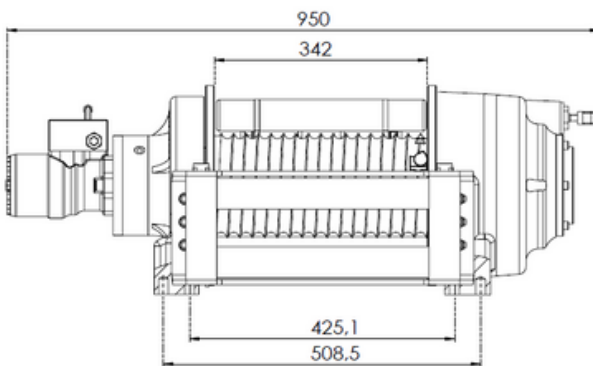
- Air Clutch
- IP67 - IP 68

Hydraulic Inlets

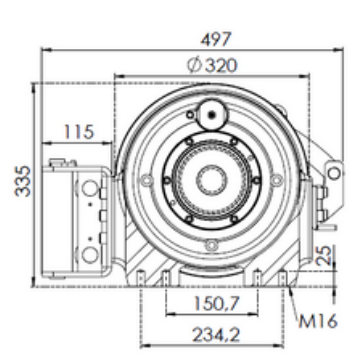
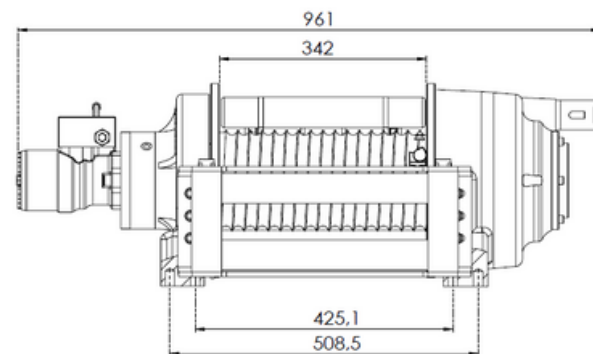
- G 1/2"

Mounting Bolts

- 16 pieces M16 8.8K



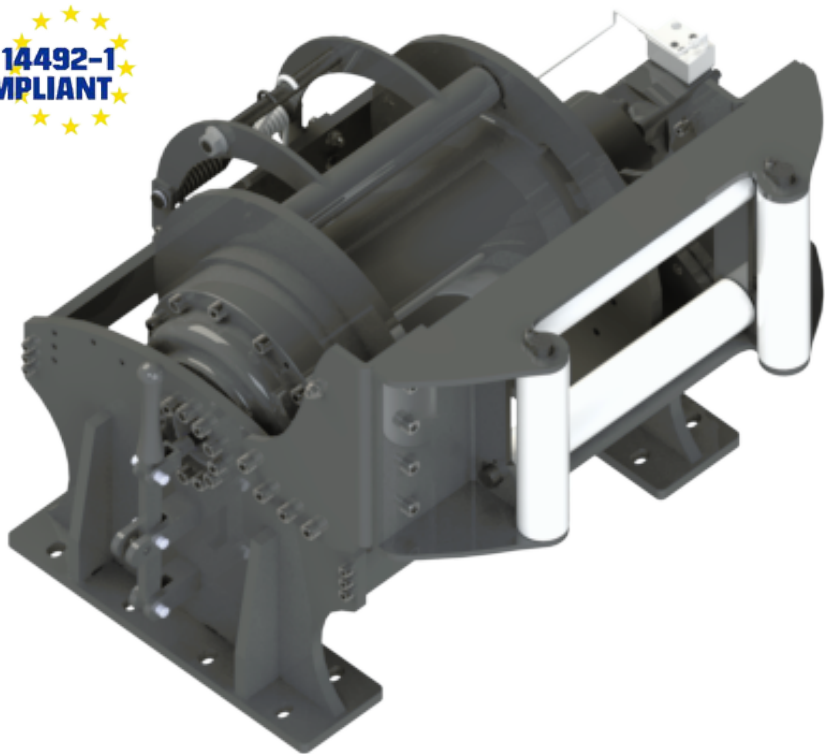
[Standard]
Manual Clutch



[Optional]
Air Clutch



EN 14492-1
COMPLIANT



- High-strength, long-lasting steel body
- Three-stage planetary gear system made of special steel, extra-strengthened by heat treatment
- Light and strong design
- Hydraulic disc brake system holding 100% load
- Rope presser (rope tensioner)
- Manual rope unloading system as standard
- High torque hydromotor
- CE Machinery Directive 2006/42/EC
- Relevant standards EN 14492-1 : 2006 Standard for power-driven cranes

Max. Pulling Force kg/lbs	30.000 kg (66138 lbs)
Max.Rope Diameter (mm/in)	26 mm (1")
Max.Rope Length (m-ft)	74 m (242 ft)
Hydromotor(cc/in³)	160 cc (19.6 in³)
Max. Pump Flow (lt/min-g/min)	75 L (19.8 gal)
Gear Ratio	150 : 1
Max. working pressure (bar/psi)	180 bar (2610 psi)
Recommended Gear Oil	140 w - 4 L
Product Weight	500 kg (1102 lbs)

Rope Winding Number	Pulling Capacity (kg/lbs)	Rope Winding Speed (mt-min/ft-min)	Rope Length (m/ft)
1	30000/66138	3.3/10.8	16.5/54
2	26250/57871	3.5/11.5	34.4/112
3	23281/51325	3.8/12.5	53.5/175
4	20917/46114	4/13	74/242

Pulling Capacity **kg/lb** Rope Speed **m/min-ft/min** Rope Length **m/ft**

- **Warning !!!**
- The A-B lines must be open to the T-Tank line before the winch can be started.
- Hydromotor Drain line must be open
- The last 5 turns of rope should always be left on the winch.
- This winch is designed and manufactured for towing purposes, do not use for lifting people or materials!
- Kms Winch reserves the right to make changes in technical details.

[Standard]
Manual Clutch

Standard

- Cable Tensioner
- Manual Clutch

Optional

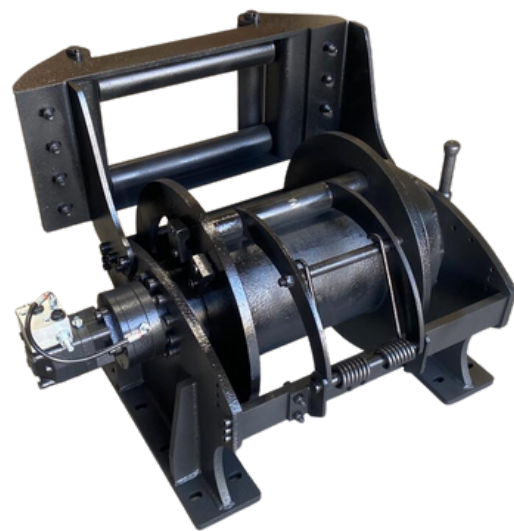
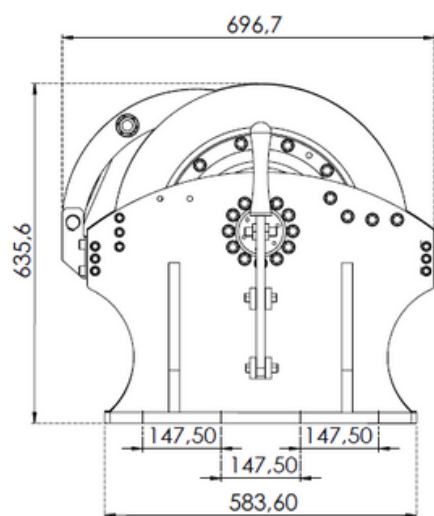
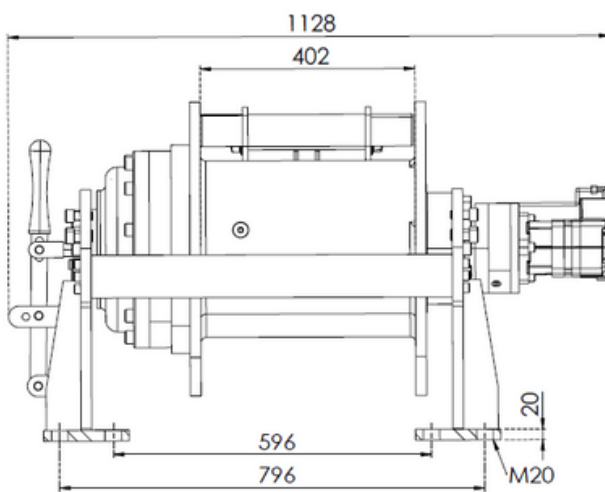
- pneumatic clutch
- IP67-IP68
- Roller Fairlead
- Personal protective panel
- Double speed option

Hydraulic Inlets

- G 3/4"

Mounting Bolts

- 16 pieces M20 8.8K



EN 14492-1
COMPLIANT



- High-strength, long-lasting steel body
- Three-stage planetary gear system made of special steel, extra-strengthened by heat treatment
- Light and strong design
- Hydraulic disc brake system holding 100% load
- Rope presser (rope tensioner)
- Manual rope unloading system as standard
- High torque hydromotor
- CE Machinery Directive 2006/42/EC
- Relevant standards EN 14492-1 : 2006 Standard for power-driven cranes

Max. Pulling Force kg/lbs	35.000 kg (77161 lbs)
Max.Rope Diameter (mm/in)	28 mm (10.9")
Max.Rope Length (m-ft)	70 m (229 ft)
Hydromotor(cc/in³)	200 cc (12 in³)
Max. Pump Flow (lt/min-g/min)	75 L (19.8 gal)
Gear Ratio	150 : 1
Max. working pressure (bar/psi)	172 bar (2494 psi)
Recommended Gear Oil	140 w - 4 L
Product Weight	520 kg (1146 lbs)

Rope Winding Number	Pulling Capacity (kg/lbs)	Rope Winding Speed (mt-min/ft-min)	Rope Length (m/ft)
1	35000/77161	2.6/8.5	15.4/50.5
2	30272/66738	2.85/9.3	32.1/105
3	26665/58786	3/9.8	50./164
4	23826/52527	3.3/10.8	70/229

Pulling Capacity **kg/lb** Rope Speed **m/min-ft/min** Rope Length **m/ft**

- **Warning !!!**
- The A-B lines must be open to the T-Tank line before the winch can be started.
- Hydromotor Drain line must be open
- The last 5 turns of rope should always be left on the winch.
- This winch is designed and manufactured for towing purposes, do not use for lifting people or materials!
- Kms Winch reserves the right to make changes in technical details.

[Standard]
Manual Clutch

Standard

- Cable Tensioner
- Manual Clutch

Optional

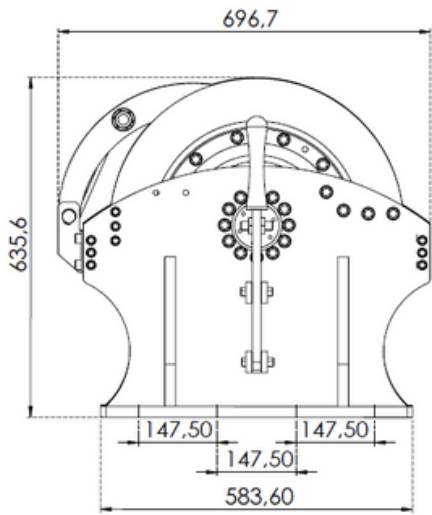
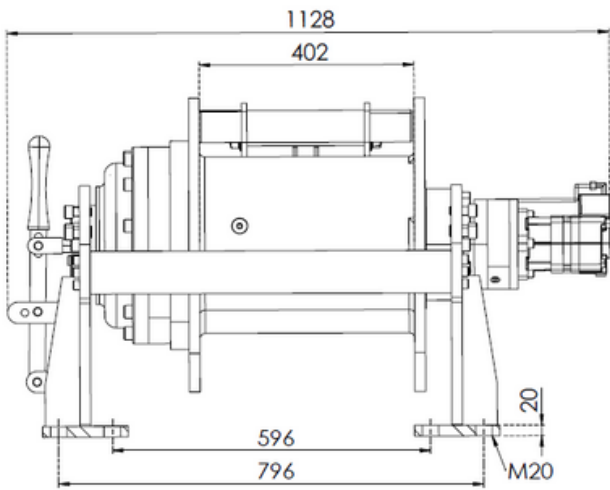
- pneumatic clutch
- IP67-IP68
- Roller Fairlead
- Personal protective panel
- Double speed option

Hydraulic Inlets

- G 3/4"

Mounting Bolts

- 16 pieces M20 8.8K



EN 14492-1
COMPLIANT



- High-strength, long-lasting steel body
- Three-stage planetary gear system made of special steel, extra-strengthened by heat treatment
- Light and strong design
- Hydraulic disc brake system holding 100% load
- Rope presser (rope tensioner)
- Roller Fairlead
- Personal protective panel
- Manual rope unloading system as standard
- High torque hydromotor
- CE Machinery Directive 2006/42/EC
- Relevant standards EN 14492-1 : 2006 Standard for power-driven cranes

Max. Pulling Force kg/lbs	40.000 kg (88184 lbs)
Max.Rope Diameter (mm/in)	28 mm (10.9")
Max.Rope Length (m-ft)	70 m (229 ft)
Hydromotor(cc/in³)	250 cc (15 in³)
Maksimum Pompa Debisi (lt/min-g/min)	75 L (19.8 gal)
Gear Ratio	150 : 1
Max. working pressure (bar/psi)	160 bar (2320 psi)
Recommended Gear Oil	140 w - 4 L
Product Weight	670 kg (1477 lbs)

Rope Winding Number	Pulling Capacity (kg/lbs)	Rope Winding Speed (mt-min/ft-min)	Rope Length (m/ft)
1	40000/88814	2/6.5	15.4/50.5
2	34645/76379	2.3/7.5	32.1/105
3	30517/67278	2.5/8.2	50./164
4	27268/60115	2.7/8.8	70/229

Pulling Capacity **kg/lb** Rope Speed **m/min-ft/min** Rope Length **m/ft**

- **Warning !!!**
- The A-B lines must be open to the T-Tank line before the winch can be started.
- Hydromotor Drain line must be open
- The last 5 turns of rope should always be left on the winch.
- This winch is designed and manufactured for towing purposes, do not use for lifting people or materials!
- Kms Winch reserves the right to make changes in technical details.

Standard

- Cable Tensioner
- Manual Clutch
- Roller Fairlead
- Personal protective pane

Hydraulic Inlets

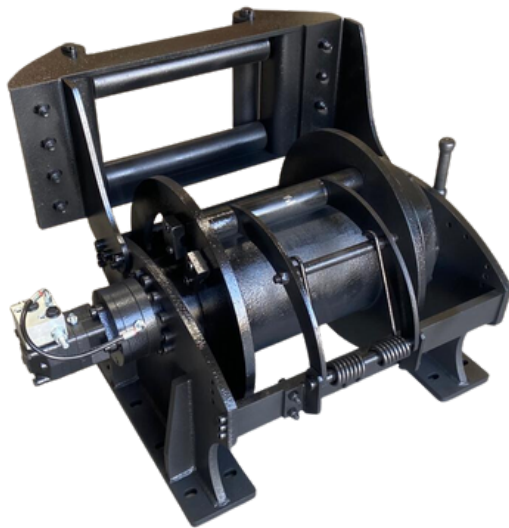
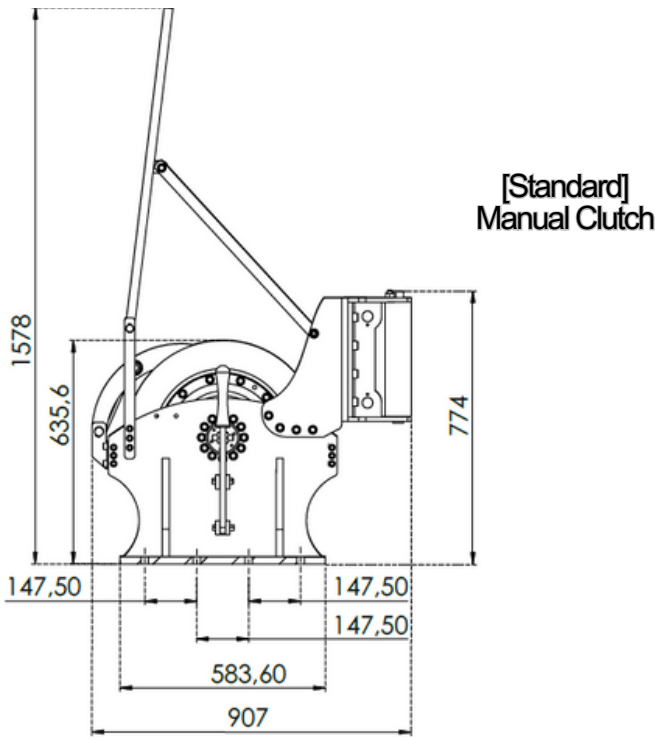
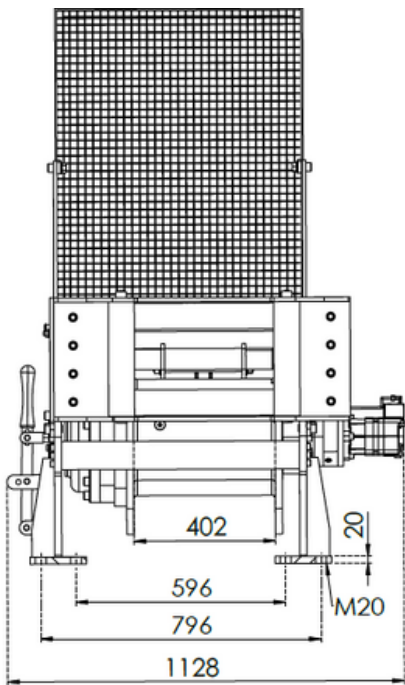
- G 3/4"

Optional

- pneumatic clutch
- IP67-IP68
- Double speed op

Mounting Bolts

- 16 pieces M20 8.8K



EN 14492-1
COMPLIANT



- High-strength, long-lasting steel body
- Three-stage planetary gear system made of special steel, extra-strengthened by heat treatment
- Light and strong design
- Hydraulic disc brake system holding 100% load
- Rope presser (rope tensioner)
- Roller Fairlead
- Personal protective panel
- Manual rope unloading system as standard
- High torque hydromotor
- CE Machinery Directive 2006/42/EC
- Relevant standards EN 14492-1 : 2006 Standard for power-driven cranes

Max. Pulling Force kg/lbs	45.000 kg (99208 lbs)
Max.Rope Diameter (mm/in)	28 mm (10.9")
Max.Rope Length (m-ft)	70 m (229 ft)
Hydromotor(cc/in³)	315 cc (19 in³)
Maksimum Pompa Debisi (lt/min-g/min)	75 L (19.8 gal)
Gear Ratio	150 : 1
Max. working pressure (bar/psi)	150 bar (2175 psi)
Recommended Gear Oil	140 w - 4 L
Product Weight	675 kg (1488 lbs)

Rope Winding Number	Pulling Capacity (kg/lbs)	Rope Winding Speed (mt-min/ft-min)	Rope Length (m/ft)
1	45000/99208	1.7/5.5	15.4/50.5
2	39500/87082	1.8/5.9	32.1/105
3	34500/76060	2/6.5	50./164
4	30750/67792	2.2/7.2	70/229

Pulling Capacity **kg/lb** Rope Speed **m/min-ft/min** Rope Length **m/ft**

- **Warning !!!**
- The A-B lines must be open to the T-Tank line before the winch can be started.
- Hydromotor Drain line must be open
- The last 5 turns of rope should always be left on the winch.
- This winch is designed and manufactured for towing purposes, do not use for lifting people or materials!
- Kms Winch reserves the right to make changes in technical details.

Standard

- Cable Tensioner
- Manual Clutch
- Roller Fairlead
- Personal protective pane

Hydraulic Inlets

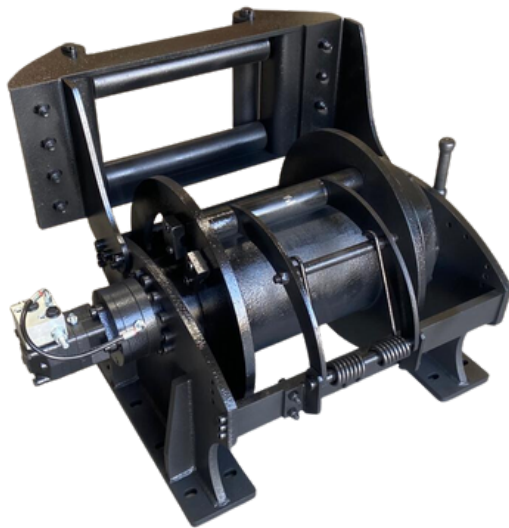
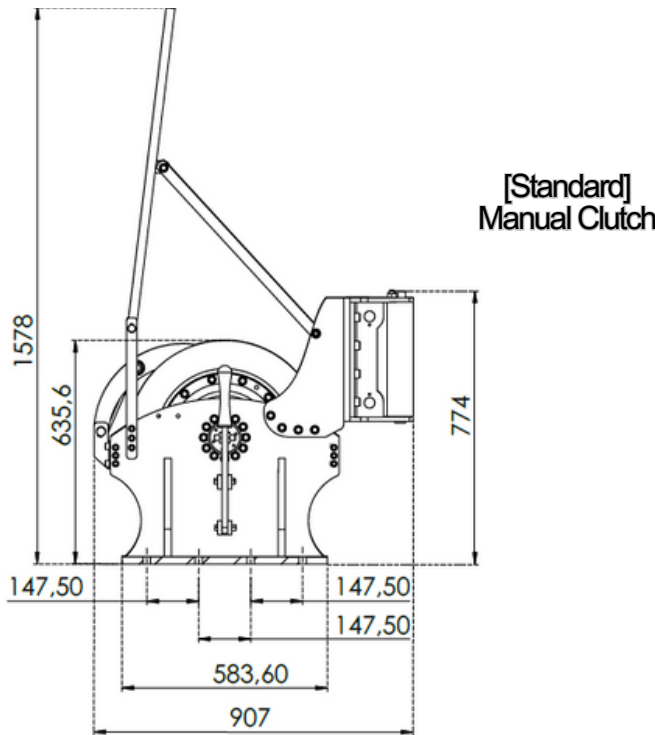
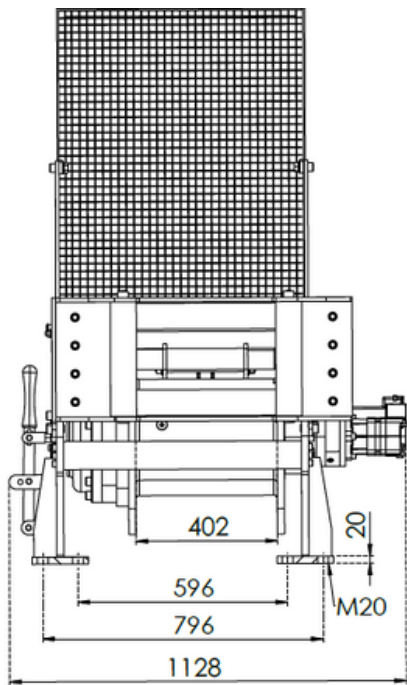
- G 3/4"

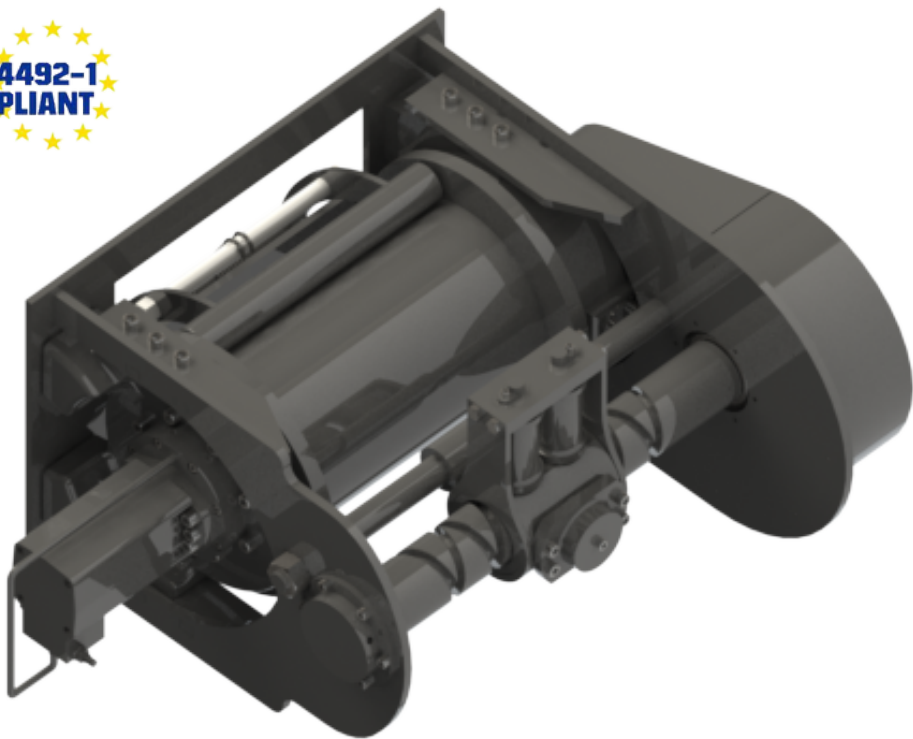
Optional

- pneumatic clutch
- IP67-IP68
- Double speed op

Mounting Bolts

- 16 pieces M20 8.8K





- High-strength, long-lasting steel body
- Two-stage planetary gear system made of special steel, extra-strengthened by heat treatment
- Lightweight and strong design
- Hydraulic disc brake system holding 100% load
- Rope presser (rope tensioner)
- Rope alligner guide system
- High torque hydromotor
- CE Machinery Directive 2006/42/EC
- Relevant standards EN 14492-1 : 2006 Standard for power-driven cranes
-

Max. Pulling Force kg/lbs	7.000 kg (15432 lbs)
Max.Rope Diameter (mm/in)	14 mm (3.9")
Max.Rope Length (m-ft)	65 m (213 ft)
Hydromotor(cc/in³)	250 cc (15 in³)
Maksimum Pompa Debisi (lt/min-g/min)	75 L (19.8 gal)
Gear Ratio	18 : 1
Max. working pressure (bar/psi)	160 bar (2320 psi)
Recommended Gear Oil	90 w - 2 L
Product Weight	350 kg (771 lbs)

Rope Winding Number	Pulling Capacity (kg/lbs)	Rope Winding Speed (mt-min/ft-min)	Rope Length (m/ft)
1	7000/15432	12/39.3	19.5/63.9
2	6283/13851	12.8/42	41.6/136.4
3	5700/12566	13.5/42.3	65/213

Pulling Capacity **kg/lb** Rope Speed **m/min-ft/min** Rope Length **m/ft**

- **Warning !!!**
- The A-B lines must be open to the T-Tank line before the winch can be started.
- Hydromotor Drain line must be open
- The last 5 turns of rope should always be left on the winch.
- This winch is designed and manufactured for towing purposes, do not use for lifting people or materials!
- Kms Winch reserves the right to make changes in technical details.

Standard

- Halat Gerdirme aparatı
- Halat hizalayıcı klavuz sistem

Hydraulic Inlets

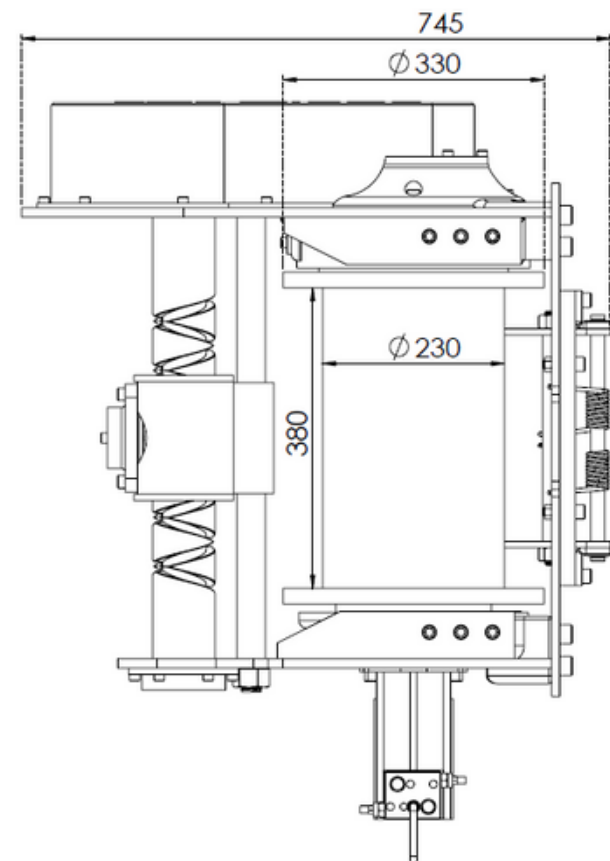
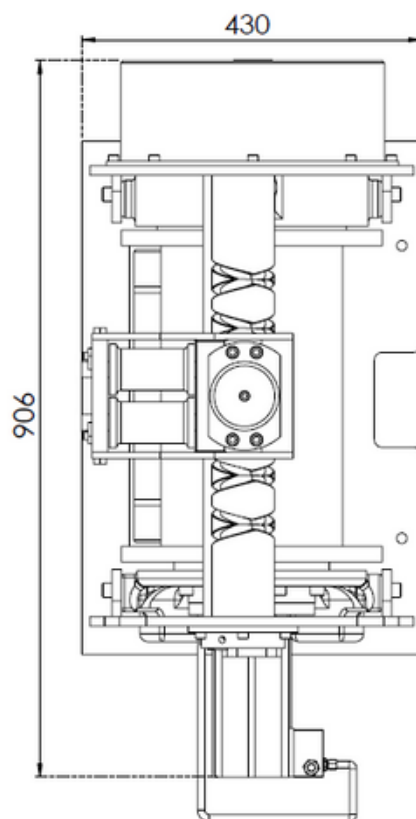
- G 3/4"

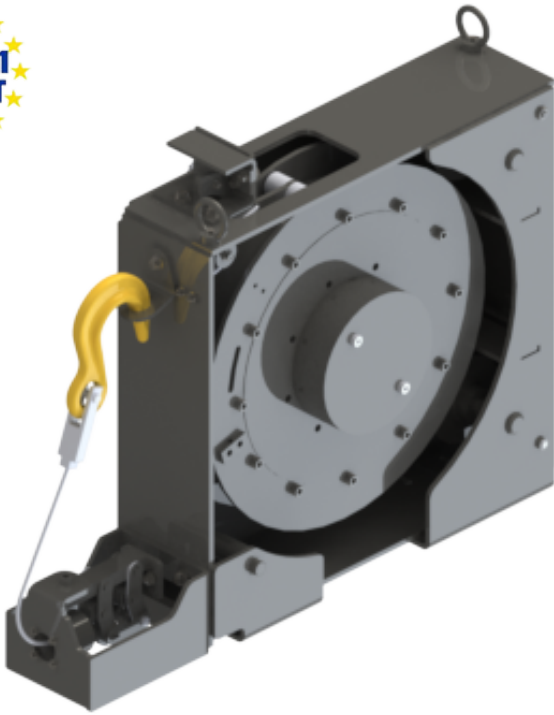
Optional

- pneumatic clutch
- IP67-IP68

Mounting Bolts

- 8 pieces M16 8.8K

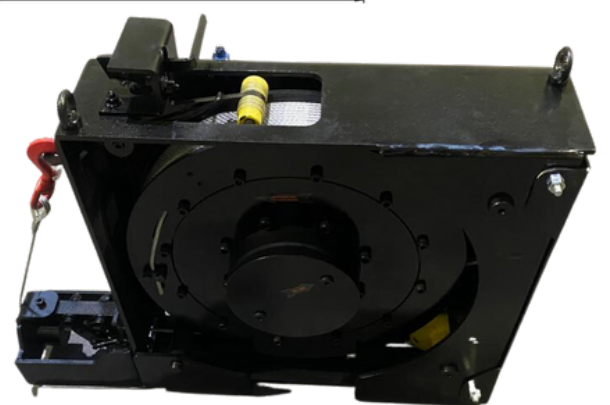
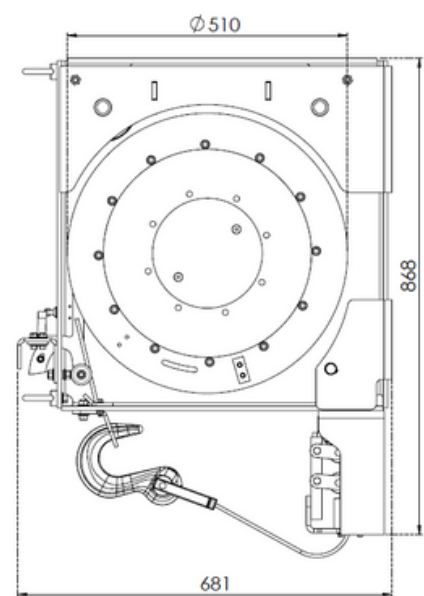
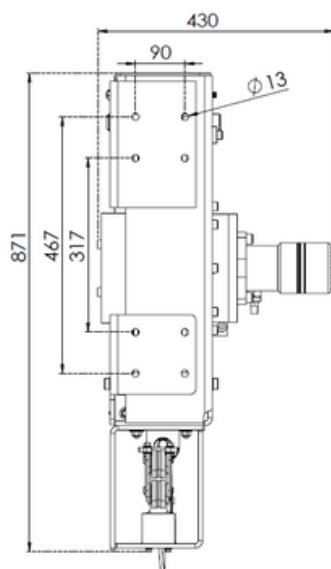




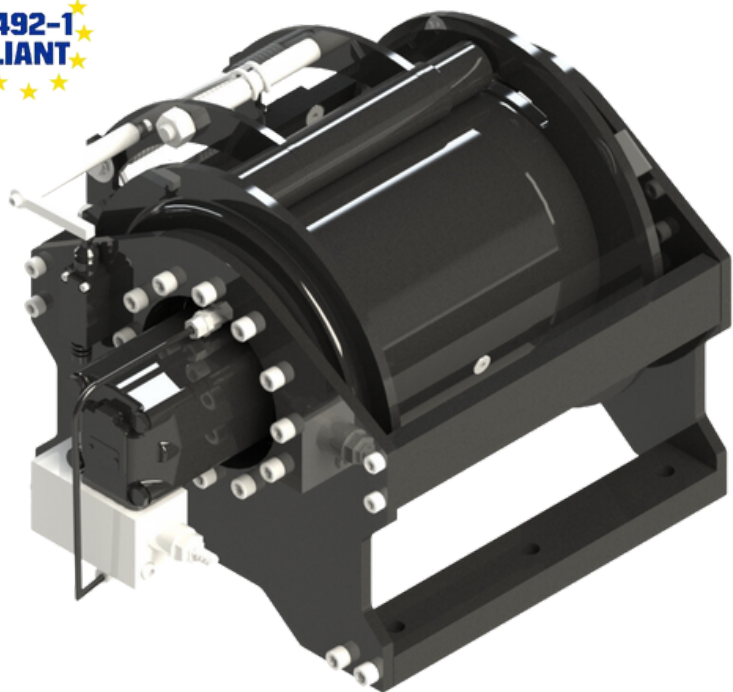
- | | |
|---|---------------------|
| Max. Pulling Force
kg/lbs | 1.000 kg (2204 lbs) |
| Max.Rope Diameter
(mm/in) | 6 mm |
| Max.Rope Length
(m-ft) | 130 m (426.5 ft) |
| Hydromotor(cc/in³) | 315 cc (19 in³) |
| Maksimum Pompa
Debisi (lt/min-g/min) | 60 L (15.8 gal) |
| Gear Ratio | 3.4 : 1 |
| Max. working pressure
(bar/psi) | 160 bar (2320 psi) |
| Recommended Gear Oil | 140 w - 0.7 L |
| Product Weight | 205 kg (452 lbs) |

Rope Winding Number	Pulling Capacity (kg/lbs)	Rope Winding Speed (mt-min/ft-min)	Rope Length (m/ft)
1	1000/2204	72.8/238	17/55.7
2	975/2150	73.9/242	34.5/113
3	944/2081	74.9/245	52.5/172
4	924/2037	75.8/249	71/233
5	900/1984	77/252	90/295
6	878/1935	78/255	109.5/359
7	850/1873	79/259	130/426.5

- **Warning !!!**
- The A-B lines must be open to the T-Tank line before the winch can be started.
- Hydromotor Drain line must be open
- The last 3 turns of rope should always be left on the winch.
- This winch is designed and manufactured for towing purposes, do not use for lifting people or materials!
- Kms Winch reserves the right to make changes in technical details.



EN 14492-1
COMPLIANT



- High-strength, long-lasting steel body
- Extra reinforced planetary gear system by heat treatment made of special steel
- Lightweight and strong design
- Hydraulic disc brake system holding 100% load
- High torque hydromotor
- CE Machinery Directive 2006/42/EC
- Relevant standards EN 14492-1 : 2006 Standard for power-driven cranes
- High rope capacity
- Spring rope presser

Max. Hoisting Force kg/lbs	2.000 kg (4409 lbs)
Max.Rope Diameter (mm/in)	10 mm (3/8")
Max.Rope Length (m-ft)	113 m (370 ft)
Hydromotor(cc/in³)	250 cc (15 in³)
Max. Pump Flow (lt/min-g/min)	75 L (19.8 gal)
Gear Ratio	6 : 1
Max. working pressure (bar/psi)	145 bar (2103 psi)
Recommended Gear Oil	80-90 w - 2 L
Product Weight	145 kg (319 lbs)

Rope Winding Number	Hoisting capacity (kg/lbs)	Rope Winding Speed (mt-min/ft-min)	Rope Length (m/ft)
1	2000/4409	36.3/119	20.9/68.5
2	1846/4069	37.9/124	42.6/139
3	1714/3778	39.5/129	65.3/214
4	1600/3527	41/134	88.8/291
5	1500/3306	42.7/140	113/370

hoisting capacity **kg/lb** Rope Speed **m/min-ft/min** Rope Length **m/ft**

- **Warning !!!**
- The A-B lines must be open to the T-Tank line before the winch can be started.
- Hydromotor Drain line must be open
- The last 3 turns of rope should always be left on the winch.
- Kms Winch reserves the right to make changes in technical details.

Standard

- Spring rope presser

Optional

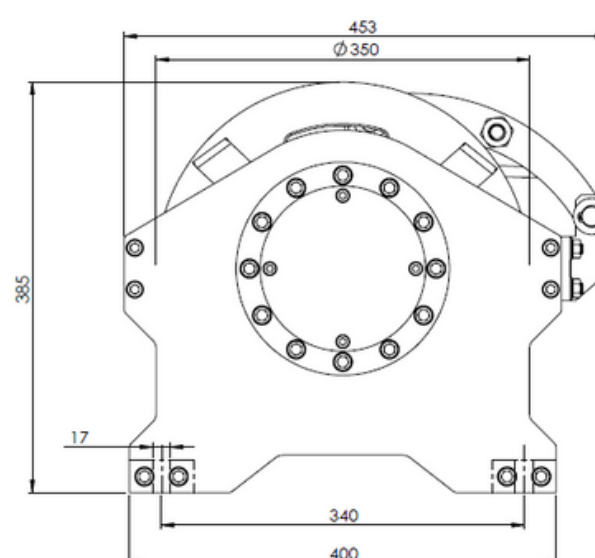
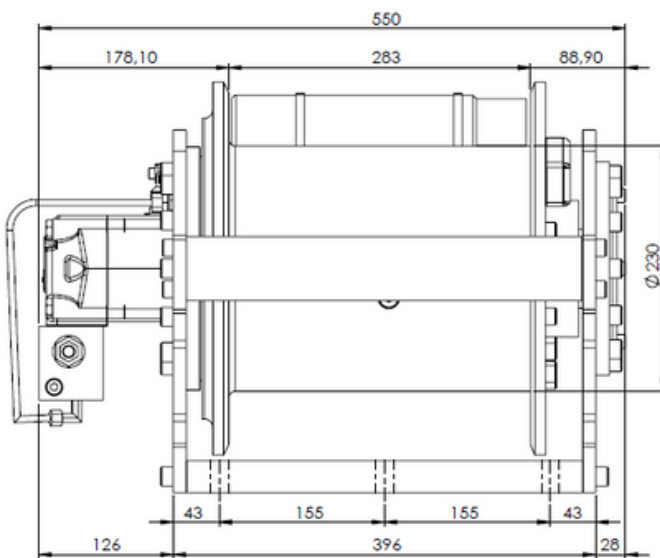
- IP67-IP68I

Hydraulic Inlets

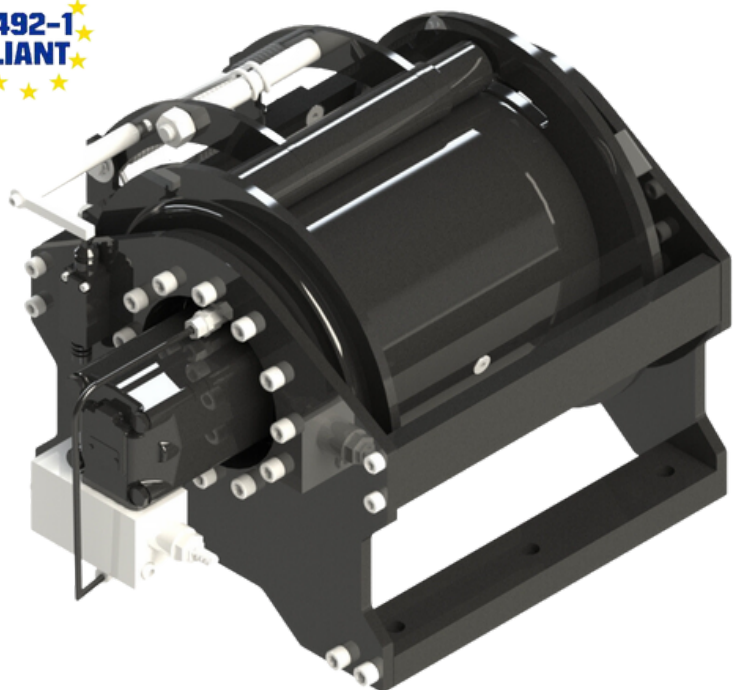
- G 3/4"

Mounting Bolts

- 6 pieces M16 8.8K



EN 14492-1
COMPLIANT



- High-strength, long-lasting steel body
- Extra reinforced planetary gear system by heat treatment made of special steel
- Lightweight and strong design
- Hydraulic disc brake system holding 100% load
- High torque hydromotor
- CE Machinery Directive 2006/42/EC
- Relevant standards EN 14492-1 : 2006 Standard for power-driven cranes
- High rope capacity
- Spring rope presser

Max. Hoisting Force kg/lbs	2.500 kg (5511 lbs)
Max.Rope Diameter (mm/in)	12 mm (1/2")
Max.Rope Length (m-ft)	97 m (318 ft)
Hydromotor(cc/in³)	315 cc (19 in³)
Max. Pump Flow (lt/min-g/min)	75 L (19.8 gal)
Gear Ratio	6 : 1
Max. working pressure (bar/psi)	140 bar (2030 psi)
Recommended Gear Oil	80-90 w - 2 L
Product Weight	150 kg (330 lbs)

Rope Winding Number	Hoisting capacity (kg/lbs)	Rope Winding Speed (mt-min/ft-min)	Rope Length (m/ft)
1	2500/5511	28.8/94.4	17.5/57
2	2284/5034	30.3/99	35.8/117.5
3	2094/4616	31.8/104	55/180
4	1934/3602	33.3/109	75.2/246
5	1797/3961	34.8/114	97/318

hoisting capacity **kg/lb** Rope Speed **m/min-ft/min** Rope Length **m/ft**

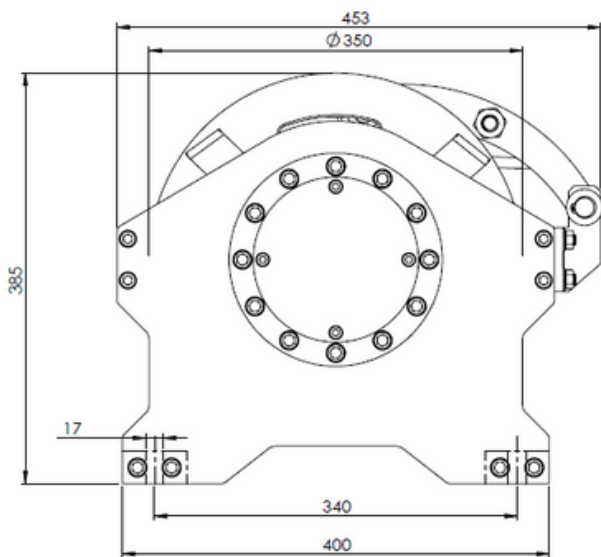
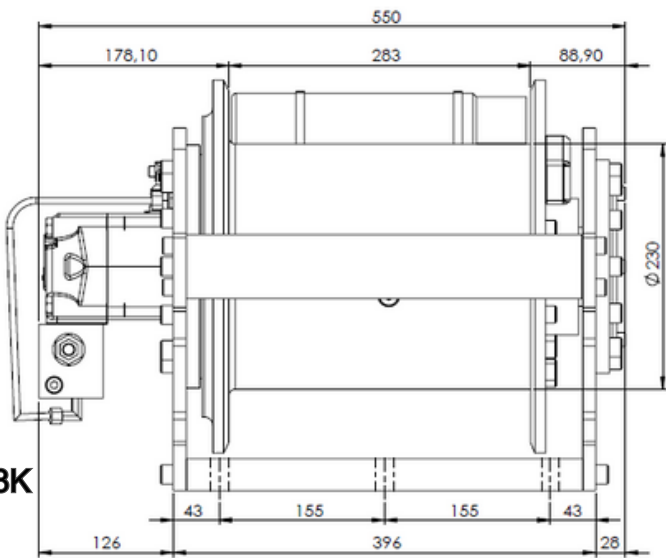
- **Warning !!!**
- The A-B lines must be open to the T-Tank line before the winch can be started.
- Hydromotor Drain line must be open
- The last 3 turns of rope should always be left on the winch.
- Kms Winch reserves the right to make changes in technical details.

- Standard**
- Spring rope presser

- Optional**
- IP67-IP68I

- Hydraulic Inlets**
- G 3/4"

- Mounting Bolts**
- 6 pieces M16 8.8K





KMS WINCH®
hydraulic machine

POWER.TRUST.QALITY

www.kmswinch.com

KMS WINCH®

hydraulic machine

Since 1982



Telefon : +90 312 394 1945
Fax : +90 312 395 1284



info@kmswinch.com
sales@kmswinch.com
export@kmswinch.com



Saray Mahallesi (Ansa Sanayi Sit.
1074 Sok No:1 C Kahramankazan
Ankara - TÜRKİYE

POWER.TRUST.QALITY

www.kmswinch.com